

# **4-H & YOUTH DEVELOPMENT OKLAHOMA STATE UNIVERSITY COOPERATIVE EXTENSION SERVICE**

## **ELIGIBILITY OF EXHIBITORS**

- \* Exhibition in this department is limited to Canadian County 4-H members who have been enrolled and actively participating in the program for a minimum of 30 days prior to the State Fair. Members should be enrolled in the project area to exhibit.
- \* The 4-H member should enter the class that matches his/her 4-H age (age as of Jan. 1 of the calendar year.)
- \* All exhibits must have been made during the last year, and cannot be entered more than one time, except for classes that are collections that are added to in successive years.
- \* For pertinent information relative to project being exhibited, refer to specific sections, classes, and respective project literature.

4-H members who enter crops and horticulture must be able to prove that they produced such crops entered in his /her name during the current year.

## **COPY WRITTEN MATERIAL AND REFERENCING SOURCES**

**All 4-H exhibits should be the original work of the 4-H member. When information is taken from books, publications, magazines, or from the internet it should be expressed in the 4-H members own words. The 4-H member must reference the source of the information by using an asterisk (\*) or a number (if more than one) and name the actual source at the end or bottom of paper, poster or educational display following an asterisk or corresponding number in text.**

No copyrighted or trademark protected written or visual material (pictures, photos, drawings, illustrations, etc.) should be used from books, magazines, publications or from the internet with out permission from the original creator. If 4-H'er applies for and is granted permission to use a copyrighted or trademark protected item, a copy of the permission form or letter needs to be attached to the back of the exhibit and properly cited with an asterisk (\*) or number. If an item (picture, photo drawing, illustration, etc.) that is not protected is used its source must be cited and referenced by using an asterisk (\*) or number and the source information placed at the end or bottom of paper, poster, or educational display, following an asterisk or corresponding number.

## **EDUCATIONAL DISPLAYS**

All educational displays must have stable, freestanding backs with sides attached. This includes Section 301 and educational displays in specific project areas. See class description for size requirements. Educational displays must be 3-dimensional. Note: The sizes indicated in specific classes is the maximum table space allowed when sides are extended.

Do not include valuables, food items that will spoil or potentially harmful products (such as aspirin, cleaning products, chemicals, etc.) in any educational display. The 4-H Program cannot accept responsibility for loss of valuables. Potentially harmful products will be discarded. **Text of displays should be readable from at least 10 ft. away.**

## **POSTERS**

For display purposes, exhibitors are encouraged to laminate all posters or cover them with clear plastic film. **Posters must be signed and dated on the back with a permanent marker before laminating.** If not marked the judging committee may mark or punch. All posters must be flat (no three-dimensional posters). **Text of posters should be readable from at least 10 ft. away.**

## **SIGNING AND DATING EXHIBITS**

Exhibits should be permanently signed and dated, in an inconspicuous location, if material permits. Some exhibits that should be signed and dated are posters, most arts and crafts including fine art, ceramics, woodworking and woodcrafts, herbarium cards, seed boards, forestry exhibits and model rocketry. Judge or Judging Committee may permanently mark exhibit with fair and year (for example: OKC Fair 2011/TSF 2011), if not signed and dated. Effort will be made to mark it in an inconspicuous place.

## **REQUIRED TRADE MARK DESIGNATION FOR USE OF 4-H CLOVER**

When using the official clover with H's, the tail should curve to the right and the words 18 U.S.C. 707 must appear under the lower right leaflet, unless poster and clover are hand drawn.

**COMMUNICATION ARTS DIVISION  
SECTION 300  
4-H POSTER-ART EXHIBIT**

**Premiums:**

**\$3, 2.50, 2, 1.50, 1, 1, 1, 1, 1, 1, 1**

**GUIDELINES:**

- \* Poster must be constructed on poster board 14" x 22" (½ of a poster board). They may be horizontal or vertical. Poster may be produced by any medium — watercolor, ink, crayon, acrylic, charcoal, collage, computer, etc.
- \* Posters must be flat. Do not use three-dimensional pieces on posters. Posters will be judged on (1) educational idea portrayed, (2) public appeal, and (3) creative and original ability presented. Copyrighted or trademarked cartoon characters or other designs must not be used due to copyright restrictions.
- \* For display purposes, exhibitors are encouraged to laminate or cover all posters with clear plastic film. **Posters must be signed and dated on the back in permanent marker before laminating. If not marked the judging committee may mark or punch. Text of posters should be readable from at least 10 ft. away.**
- \* Individual 4-H member is restricted to those exhibits designed for his or her age group.
- \* The 4-H member's name, age, and county should be on the back of the poster in the upper left hand corner.

**NOTE: Posters must include 4-H Clover or mention 4-H. When using the official clover with H's, the tail should curve to the right and the words 18 U.S.C. 707 must appear under the lower right leaflet, unless poster and clover are hand drawn.**

**Beginner Division (ages 9-11)**

Class

1. 4-H promotional poster designed to recruit 4-H members, volunteers, promote any 4-H event or promote any 4-H project including Competition Ethics.
2. Poster designed to promote 4-H and use the theme, "Join the Revolution of Responsibility" For more information about this campaign visit [www.4-h.org/about/revolution](http://www.4-h.org/about/revolution)
3. Collage recognizing or documenting Oklahoma 4-H history during one decade or the evolution of a particular 4-H project area over the decades.

**Intermediate Division (ages 12-14)**

4. 4-H promotional poster designed to recruit 4-H members, volunteers, promote any 4-H event or promote any 4-H project including Competition Ethics.
5. Poster designed to promote 4-H and use the theme, ""Join the Revolution of Responsibility" For more information about this campaign visit [www.4-h.org/about/revolution](http://www.4-h.org/about/revolution)
6. Collage recognizing or documenting Oklahoma 4-H history during one decade or the evolution of a particular 4-H project area over the decades.

**Advance Division (ages 15 and over)**

7. 4-H promotional poster designed to recruit 4-H members, volunteers, promote any 4-H event or promote any 4-H project including Competition Ethics.
8. Poster designed to promote 4-H and use the theme, "Join the Revolution of Responsibility" For more information about this campaign visit [www.4-h.org/about/revolution](http://www.4-h.org/about/revolution)
9. Collage recognizing or documenting Oklahoma 4-H history during one decade or the evolution of a particular 4-H project area over the decades.

**SECTION 301  
EDUCATIONAL BOOTH DISPLAY**

**Premiums:  
\$10, 9, 8, 7, 6, 5, 4, 3, 2, 2, 2, 2**

**GUIDELINES:**

- \* This must be an in-depth look at a 4-H project or projects. Space for the booth is 3 feet deep and 4 feet wide (with sides extended). Back can be 4 feet high. There will be no solid dividers between booths, use lightweight materials for ease in transporting. Display must be freestanding. Models, photographs, posters or other means of display may be used. Display may be prepared by an individual or group from a county. Criteria for judging will be (1) effectiveness of the message, (2) appropriateness to the theme, (3) interest and attractiveness to the public.
- \* Display must focus on **ONE** of the following and be suitable for display at a local business during national 4-H Week or at another time during the fall:
  - Promotion of a specific 4-H project
  - Member Recruitment
  - Community Service
  - The theme "Join the Revolution of Responsibility" For more information about this campaign visit [www.4-h.org/about/revolution](http://www.4-h.org/about/revolution)

**EXHIBIT MUST PROMINENTLY DISPLAY A 4-H CLOVER OR MENTION 4-H. When using the official clover with H's, the tail should curve to the right and the words 18U.S.C. 707 must appear under the lower right leaflet, except for hand drawn clovers.**

- \* Do not include valuables, food items that will spoil or potentially harmful products in any educational display. The 4-H Program cannot accept responsibility for loss of valuables. Potentially harmful products will be discarded.

Class

1. Educational Booth Display (other than community service "Join the Revolution of Responsibility)
2. Community Service Booth Display – Sharing about a community service that 4-H member has done as an individual. Should include pictures, examples, and scope of projects. The impact on others will be added criterion for judging. Project should be the extension of a 4-H project area.
3. Display using the theme "Join the Revolution of Responsibility" For more information about this campaign visit [www.4-h.org/about/revolution](http://www.4-h.org/about/revolution)

**SECTION 302  
4-H PHOTOGRAPHY**

**Premiums:  
\$2, 1.50, 1, 1, 1, 1, 1, 1, 1, 1, 1, 1**

**GUIDELINES:**

- \* These exhibits consist of photos taken by the individual exhibitors. A photo can be entered only one year. **Individuals can exhibit in only one Unit**, and may enter only one exhibit per class in that unit. Unit 1 is for members who have taken pictures for three years or less, Unit 2 is for those who have taken pictures for four to six years, and Unit 3 is for those who have taken pictures for more than six years. All ages within each unit are as of January 1 of the current calendar year.
- \* **DIGITAL PHOTOS may be entered. Changes that can be made and still be entered in the photography section are color and contrast adjustments, cropping, gray scaling, exposure adjustments, and red eye reduction.**
- \* **PRINTS:** Black and white or color prints may be exhibited. Prints must be no smaller than 3.5" x 5" and no larger than 5" x 7" (except when panoramic prints are used) for all classes, except classes 5, 10, 14, 18, and 22 where prints may be up to 8" x 10". **Prints should be printed on photo-quality paper (not copy paper). Print quality is taken into consideration by the Judges. Photos will be disqualified if in a frame.**
- \* **TITLES, CAPTIONS AND OTHER REQUIRED INFORMATION:** On the front of the board, there must be a title and each photo must have a caption giving the viewer more information about the photograph. The back of each board must include the exhibitor's name, county, number of years in the 4-H photography project, camera type and megapixels. Classes 11-21 only include the film speed or digital ISO, shutter speed and aperture.
- \* **BOARDS:** Prints must be securely attached to the surface of a white or a colored foam core, poster or mat board. No double matting, use of multiple layers or more than one color. The entire print must be seen and cannot be masked in any way. Boards must be 10" x 10" or 14" x 14" for all classes, except classes 15-17 and 19-21 where boards must be 14" x 14".
- \* **TITLE AND OTHER INFORMATION:** Each board must have a title. The back of each board must contain the exhibitor's name, county and number of years in the 4-H photography project, along with the type of camera used (Instamatic, 35 mm, digital, etc.), whether the camera is adjustable or not and film speed or mega pixels.

## 4-H PHOTOGRAPHY EXHIBITS

### Unit 1: Adventures with Your Camera.

#### Junior Classes – Ages 9-13 (for members who have taken pictures for 3 years or less).

##### Class

1. **Four photos**, one from each of the following categories: people, animals, plant life and scenery.
2. **Four photos of people** doing different things, showing a variety of activities, camera angles and lighting choices.
3. **Four otherwise outstanding photos** showing common mistakes in picture taking. The caption for each print must correctly identify what is wrong and provide an appropriate solution to prevent the mistake.
4. **Series of 4 photos** telling a story or illustrating a single event.
5. **Best individual photo** made this year.

#### Senior Classes – Ages 14 and over (for members who have taken pictures for 3 years or less).

6. **Four photos**, one from each of the following categories: people, animals, plant life and scenery.
7. **Four photos of people** doing different things, showing a variety of activities, camera angles and lighting choices.
8. **Four otherwise outstanding photos** showing common mistakes in picture taking. The caption for each print must correctly identify what is wrong and provide an appropriate solution to prevent the mistake.
9. **Series of 4 photos** telling a story or illustrating a single event.
10. **Best individual photo** made this year.

### Unit 2: Exploring Photography

#### Unit 2 is for members who have taken pictures for 4 to 6 years.

#### Junior Classes – Ages 9-13 (for members who have taken pictures for four to 6 years).

11. **Four photos** showing good composition, such as placement of subject, framing, contrast or perspective. The caption for each photo or the title of the board must explain the ideas being illustrated.
12. **Four action photos.**
13. **Four photos showing effective use of light** (such as natural and electronic flash).
14. **Best individual photo** made this year.

#### Senior Classes – Ages 14 and over (for members who have taken pictures for 4 to 6 years).

15. **Four photos showing good composition**, such as placement of subject, framing, contrast or perspective. The caption for each photo or the title of the board must explain the ideas being illustrated.
16. **Four action photos.**
17. Four photos showing effective use of light (such as natural or electronic flash). **The caption for each photo or the title of board must explain the ideas being illustrated.**
18. **Best individual photo** made this year.

### Unit 3: Mastering Photography

#### Unit 3 is for members who have taken pictures for more than 6 years (All Ages).

19. **Four photos showing members' knowledge** of one of the following: different lenses, photo lamps, existing light, filters, or special effects. The caption for each photo or the title of the board must explain the idea(s) being illustrated.
20. **Four outstanding "people" pictures.**
21. **Four landscapes or nature photos.**
22. **Best individual photo** taken this year.

**Digitally Adjusted Photos.** Exhibit must include both the original photo labeled "original photo", the digitally adjusted photo labeled "adjusted photo", with a short summary of what was done (cropping, red-eye removal, color or contrast adjustment, exposure adjustment, etc.) Must be on a poster or mat board 14" x 14".

23. **Junior (9-13 years old)**
24. **Senior (14 and over)**

**Digitally altered photograph/photographic illustration taken with a digital camera by the exhibitor.** Alterations are beyond common photography techniques of red eye removal, cropping, etc. Exhibit includes a print of the original photograph, labeled "original photo," and the digitally altered image, labeled "photographic illustration". Must be securely attached to the explanation of the alterations to the back of the exhibit.

25. **Junior (9-13 years old)**
26. **Senior (14 and over)**

#### **Digitally altered scanned image.**

Exhibit must include the original image, labeled and the digitally altered image, both labeled. Alterations are beyond common photography techniques of red eye removal, cropping, etc. Must be securely attached to foam core or poster board and be no larger than 14X14. Attach up to 1/2 page of written explanation of the alterations to the back of the exhibit. Trademark images may not be used.

27. **Junior (9-13 years old)**
28. **Senior (14 and over)**

**EXPRESSIVE ARTS DIVISION**  
**SECTION 303**  
**LEISURE EDUCATION AND CULTURAL ARTS**  
**Juniors ---- Ages 9-13**  
**Seniors ---- Ages 14 and over**  
**Premiums: \$2.75, 2.50, 2, 1.75, 1.25, 1.25, 1, 1, 1, 1, 1, 1**

**GUIDELINES:**

- \* This exhibit will consist of articles made in the 4-H Leisure Education and Cultural Arts Projects. The articles exhibited in this section are items other than required for the Woodworking Projects. Individual members may enter only one exhibit per class. Exhibits in all classes are limited to items that cannot be exhibited in other sections. Exhibits must be permanently signed and dated in an inconspicuous location, if size and material permits. Ceramics should be signed before firing. Judge or Judging committee may mark exhibit with Fair and Year (for example: OKC, 2011), if not signed and dated. Effort will be made to mark in an inconspicuous place.
  
- \* Paintings, drawings and other items that would be hung must have a hanger attached or they may not be displayed.

**Class**

**Jr      Sr**

1.      2. Fine Art — Pencil, charcoal, pastels, chalk, ink
3.      4. Fine Art — Watercolor
5.      6. Fine Art—Oil or acrylic
7.      8. Ceramics—Glazed (maximum of one piece)
9.      10. Ceramics -- Stained (maximum of one piece)
11.     12. Pottery -- Original design made from clay using a process of hand molding or a potter's wheel
13.     14. Print Process Article -- Block printing and other printing methods.
15.     16. Decorative Textile Craft -- Silk screening, stenciling, textile painting, batik, tie dye
17.     18. Wood Carving Article
19.     20. Woodcraft -- Original design
21.     22. Woodcraft -- Kit
23.     24. Metal Craft -- Embossed, tooled, etched
25.     26. Metal Craft -- Soldered or welded
27.     28. Nature Craft -- Article made from natural materials including weaving or basket making
29.     30. Bead Craft Article
31.     32. Leathercraft -- Kit
33.     34. Leathercraft -- Original Design
35.     36. Hand Crafted Wax Candle
37.     38. Hand Crafted Gel Candle
39.     40. Fabric Craft -Needlepoint, crewel embroidery
41.     42. Fabric Craft -Cross-stitch or counted cross-stitch
43.     44. Fabric Craft - Item Decorated with Machine Embroidery
45.     46. Fabric Craft - Item Decorated with Hand Embroidery
47.     48. Fabric Craft - Hand Quilted and/or appliquéd
49.     50. Fabric Craft - Machine Quilted and/or appliquéd
51.     52. Fabric Craft - Knitted or crocheted
53.     54. Fabric Craft - Doll or animal
55.     56. Creative Textile Craft Article - Made only from techniques of weaving, latch-hook, braiding and/or a combination of these techniques
57.     58. Puppet
59.     60. Paper Craft
61.     62. Plastic Craft-includes but not limited to Lego Art
63.     64. Miscellaneous (limited to items that cannot be entered in any other class.)

**SCIENCE AND TECHNOLOGY DIVISION**  
**SECTION 304**  
**4-H Technology Exhibits**  
**Premiums: \$4, 3.50, 3, 2.50, 2, 1.50, 1, 1, 1, 1, 1, 1**  
**GUIDELINES:**

- \* The 4-H technology exhibits are open to all ages. They will be judged separately in two age groups. Juniors – ages 9-13 year olds; Seniors – ages 14 & over. Every exhibit must be labeled on the back with the following information: Name, Club, County, Age as of January 1 and date poster or exhibit was made.
- \* Copy written materials such as professional photos, books, publications or items on the internet should not be used as original.

**Flat flyer (one-sided) designed by the exhibitor to promote a club or county 4-H education program or activity.**

Computer generated flat flyer (**8½" X 14" or 8½" X 11"**). Flat flyers should be securely attached to an appropriately sized poster board.

- 1. Jr.**
- 2. Sr.**

**Brochure, card or invitation related to 4-H** (may be double-, tri-, or four-fold measuring 8½" x 11" or 8½" by 14 before folding.) Attach 2 flat copies of the brochure (one side showing the front and the other side showing the back of the brochure) to an appropriately sized poster board. Attach a large envelope to the back of the board and insert a folded copy of the brochure.

- 3. Jr.**
- 4. Sr.**

**Web page designed by the exhibitor** Can be for their 4-H Club, Extension Office, County 4-H Program, or their own personal home page that includes content related to 4-H. Exhibit (not to exceed 36" X 36") consists of a display containing a printout of each page of the web page and a CD with all necessary computer files. To explain layering that cannot be clearly depicted with printouts, written explanation may also be included.

- 5. Jr.**
- 6. Sr.**

**PowerPoint Presentation related to 4-H.** Presentation should either promote 4-H or educate about a 4-H project. Presentations should include an official 4-H Clover including required trademark designation. Presentation entry includes a printout of at least 5 slides and script/presentation notes in a folder or notebook. Include presentation file on a labeled CD (in an envelope). All PowerPoint presentations should be mounted on a freestanding display board not to exceed 36" X 36" when the sides are extended for display. Commercially available "Science Fair Presentation boards" are encouraged."

- 7. Jr.**
- 8. Sr.**

**Global Positioning Systems (GPS)/Geographic Information Systems (GIS) Exhibits**

- \* 4-H Youth will learn about Geographic Information Systems (GIS) concepts by collecting data on a location, describing the attributes.
- \* Youth will learn about geospatial technology applications and future career opportunities by working with local government agencies and project partners in their own communities.
- \* Increased youth involvement in community service and awareness projects that impact local communities by enhancing economic and community development.
- \* The 4-H GPS/GIS exhibits will be judged in two age groups. Juniors – ages 9-13 year olds; Seniors – ages 14 & over. Every exhibit must be labeled on the back with the following information: Name, Club, County, Age as of January 1 and date poster, map or exhibit was made.
- \* Posters/Maps must be 14" x 22". Exhibitors are encouraged to laminate all flat exhibits or cover them with clear plastic film.
- \* Displays must be freestanding and not be larger than 3' x 3' (width x depth) with sides extended for display.

**Poster showing the parts of a GIS map** with an explanation identifying the purpose of each item.

- 9. Juniors (9-13)**
- 10. Seniors (14 and over)**

**Display illustrating how GPS works,** including the user, control and space segments of the system.

- 11. Juniors (9-13)**
- 12. Seniors (14 and over)**

### **Geocache box.**

Exhibit would include geocache box with contents, description & photograph of the location in which the box will be located. (Check Geocaching.com for instructions on placing and describing)

**13. Juniors (age 9-13)**

**14. Seniors (age 14 and over)**

### **Hand drawn map.**

Map can either be informational or directional. Attach a one page explanation of the purpose for the map.

**15. Juniors (9-13)**

**16. Seniors (14 and over)**

### **Computer generated map.**

Map can be either informational or directional. Attach a one page explanation of the purpose for the map.

**17. Juniors (9-13)**

**18. Seniors (14 and over)**



## **Group Projects (Developed by two or more 4-H members)**

### **Hand drawn map.**

(Map can either be informational or directional). Attach a one-page explanation of the purpose for the map.

**19. Juniors (9-13)**

**20. Seniors (14 and over)**

### **Computer generated map.**

Map can be either informational or directional. Attach a one-page explanation of the purpose for the map.

**21. Juniors (9-13)**

**22. Seniors (14 and over)**

### **Club or County Mapping Project Display**

CLASS

23. Displays must be free standing and are limited to 36"X36" (width x depth) when sides are extended. Commercially available "Science Fair Presentation Boards" are encouraged. It should show and explain the project in detail including printouts of maps, pictures of the project being done, who was collaborated with, and how the project results have and will be utilized. Exhibit must be labeled on the back with the following information for all participating members: Name, Club, County, Age as of January 1 and date poster or exhibit was made.

## **4-H Robotics**

- \* The goal of the 4-H robotics program is for 4-H members to explore science, technology and engineering through designing and building a functioning robot. The robot can be either programmable or remote controlled. The robot can be created by an individual or a group.
- \* The 4-H robotics exhibits are open to all ages. They will be judged separately in two age groups. Juniors – ages 9-13 year olds; Seniors – ages 14 & over. Every exhibit must be labeled on the back with the following information: Name, Club, County, Age as of January 1 and date poster or exhibit was made.
- \* Attach a 3"x 5" index card to each robot/exhibit, explaining:
  - ⇒ Construction material, how constructed and goal of project.
  - ⇒ Year in project
  - ⇒ Age of member
  - ⇒ Whether or not made from kit
  - ⇒ Other pertinent information
  - ⇒ Each exhibit should have a one page report explaining the function, purpose and construction of the robot.
  - ⇒ Displays must be freestanding and are limited to 3' X 3' (width X depth) when sides are extended for display.

### **Programmable Robot**

24. Juniors (9-13)

25. Seniors (14 and over)

### **Remote-controlled Robot**

26. Juniors (9-13)

27. Seniors (14 and over)

### **Display with photographs and explanation of a member developed robot which is not available for exhibit.**

28. Juniors (9-13)

29. Seniors (14 and over)

**Group Projects—Developed by two or more 4-H members working together** (Include all 4-H members' information involved on index card)

30. Programmable Robot

31. Remote-controlled Robot

32. Display with photographs and explanation of a member developed robot which is not available for exhibit.

**SECTION 305  
SCIENCE DISCOVERY PROJECTS**

**Premiums:**

**\$4, 3.50, 3, 2.50, 2, 1.50, 1, 1, 1, 1, 1**

**GUIDELINES:**

The goal of this project and exhibit is to allow 4-H members to:

- \* Use the scientific method to gain an understanding of how things work and the variables that affect them.
- \* Take an open and creative approach to problem solving.
- \* Learn that a successful outcome is based not on personal opinion but on scientific fact.
- \* Improve written and visual communication skills.

4-H members are encouraged to use their 4-H projects as the basis for their scientific research and discovery project. Exhibits should relate to one of the following topics:

- ⇒ Behavioral and Social Sciences
- ⇒ Biochemistry, Medicine, and Health Sciences
- ⇒ Botany and Zoological Sciences
- ⇒ Computer Science
- ⇒ Earth and Space Sciences
- ⇒ Engineering
- ⇒ Environmental Sciences
- ⇒ Mathematics
- ⇒ Physical Sciences



A few resources for finding project ideas are:

- The WWW Virtual Library: Science Fairs -  
<http://physics.usc.edu/~gould/ScienceFairs/>
- Science Fair Central -  
<http://school.discovery.com/sciencefaircentral/>
- Information about Oklahoma Science Fairs -  
<http://www.ossef.ecok.edu>

Displays must be freestanding and are limited to 36" X 36" (width x depth) when sides are extended. Commercially available "Science Fair Presentation Boards" are encouraged.

**Classes:**

1. **Beginning Division** (9-11 year olds) - A display illustrating the project.
2. **Intermediate Division** (12-14 year olds) - A display with an accompanying report of approximately two type-written pages.
3. **Advanced Division** (15 and over) - A display and a written report about the project that includes an interview with a scientist or someone who works in the area that is being studied. Reports should be three to five pages in length.
4. **Team Exhibit** (All Ages) - Team may include a maximum of three members. - A display and a written report about the project. It is recommended that it include an interview with a scientist or someone who works in the area that is being studied. Reports should be three to five pages in length.

# FAMILY LIVING DIVISION

## SECTION 306 4-H FABRICS & FASHIONS

### Premiums:

**\$4, 3.50, 3, 2.50, 2, 1.50, 1, 1, 1, 1, 1, 1**

### GUIDELINES:

- \* Refer to 4-H Fashion and Fabrics Member's & Leader's Guides for guidelines in construction and design of exhibits. Any one exhibit should demonstrate the exhibitors knowledge and application of textile science, personal image, consumer education and construction. The Leader's guide provides a tool for learning how to evaluate a "project". Requirements are available in the Extension office.
- \* A 4-H member may enter one exhibit per class, but is restricted to those exhibits designed for his or her age group.
- \* Posters must be signed and dated on the back in permanent marker prior to laminating. Judging committee may mark or punch if not marked. Text of posters and displays should be readable from at least 10 ft. away.

## CLOTHING CONSTRUCTION EXHIBITS

Hangers will not be returned. If padding is needed, use tissue paper. Do not use hangers for small items or items that are not normally hung.

### Competitive Classes

#### Beginning Level (Ages 9-11)

1. Pillowcase (1) (Pattern/instructions provided)
2. Laundry Bag (Pattern/instructions provided)
3. Chef or Work Apron (Pattern/instructions provided)
4. Tote Bag (Pattern/instructions provided)
5. Garment Bag (May use pattern/instructions provided or commercial pattern)
6. Skirt with full elastic waist or mock elastic waist (elastic casing in the back)
7. Shorts with full elastic waist or mock elastic waist (elastic casing in the back)
8. Simple two-piece active sportswear (no collars, no set-in sleeves)
9. Simple curtains
10. Item or Simple garment made of polar fleece
11. Beginning Poster: Must be on 14" x 22" poster board. Use one of the following themes:
  1. Label the parts of a sewing machine.
  2. Illustrate and label up to 10 items needed in a basic sewing kit. No three-dimensional posters.

#### Intermediate Level (Ages 12-14)

12. Bath Robe
13. Pull-on top and coordinating bottom with elastic waist (shorts, pants or skirt)
14. Blanket with binding (can be for human or animal)
15. Shorts, Pants, Skirt or Culottes with waistband
16. Item made of Polar Fleece **(One or more sewing techniques from beginner or intermediate level sample notebook must be used. It is recommended to attach a 3"x 5" card indicating technique). Examples include hats, simple ponchos, and mitts**
17. One-piece garment (dress, jumpsuit, jacket, shirt, etc.) using one or more of the techniques from the Intermediate Level Sample Notebook. It is recommended to attach a 3" x 5" card indicating techniques used.
18. Two-piece garment using one or more of the techniques from the Intermediate Level Sample Notebook. It is recommended to attach a 3" x 5" card indicating techniques used.
19. Any non-clothing item using one or more of the techniques from the Intermediate Level Sample Notebook. It is recommended to attach a 3" x 5" card indicating techniques used.
20. Intermediate Poster - Must be on 14" x 22" poster board. Use one of the following themes:
  1. Cost comparison of ready-made and home-sewn garment similar in fabric and design;
  2. Show a pattern and 3 samples of appropriate fabrics. Tell why fabric is appropriate on attached sheet of plain paper.
  3. Five samples of fabric weaves with fiber content to include knit, plain weave, satin weave, twill weave, and a non-woven fabric. No three-dimensional posters.

### **Advanced Level (Ages 15-19)**

21. Item made with Polar Fleece **(One or more sewing techniques from intermediate or advanced level sample notebook must be used. It is recommended to attach a 3" x 5" card indicating technique) Examples include jackets, coats, and hooded garments.**
22. Two-piece ensemble using one or more of the techniques from the Advanced Sample Notebook. It is recommended to attach a 3"x 5" card indicating techniques used.
23. Lined skirt, pants, or jacket
24. Unlined Garment
25. Coat - lined or unlined
26. Lined suit or dress
27. Special occasion garment - i.e. prom dress, English riding habit, etc.
28. Educational Display - Must be free standing with sides attached and fit 3' X 3' (width x depth) space. Commercially available "Science Fair Presentation Boards" are encouraged. Select one of the following:
  1. Report of project involving clothing for a special situation (i.e. pesticides, industrial, protective),
  2. Self determined, such as a report on handicapped and/or elderly specialized clothing. Must emphasize construction, usability, practicality and need.

## **Fun Items (JUDGED AGAINST STANDARD)**

### **Beginning Level (Ages 9-11)**

29. Fun Item - decorated ready-made shirt using fusible web, fabric scraps, trims or buttons. Paints, if used, must be used with one or more of the above. No commercial iron-on transfers.
30. Fun Item - potholder or hot mat
31. Beginning Sample Notebook - may be entered all years but 3 new samples must be added each year. Samples must be attached to sample cards available from Extension Office. Note project year the sample was made in upper right hand corner of card.
  1. Three seam finishes-edge stitched, pinked and edge stitched, zigzag
  2. Button with thread shank and button with shank
  3. Snap and hook and eye samples
  4. Hem samples - machine top-stitch hem, catch stitch
  5. Three basting samples - hand even, hand uneven, machine basting
  6. Two decorative stitches - machine decorative stitch (your choice), cross stitch
  7. Elastic casing sample
  8. Interfacing samples - non-woven, woven, and fusible
  9. Facing sample - grade, under stitch and clip

### **Intermediate Level (ages 12-14)**

32. Fun Item - **Recycled garment (exhibit must include before picture and a cost sheet attached)**
33. Fun Item - Decorate a garment using one or more of the following techniques: machine decorative stitches, flat braid, sew-on appliqué, hand embroidery or other technique. Must include at least one sewn technique. Attach a 3" x 5" card indicating technique used.
34. Fun Item - Sewn item related to another project. Attach a 3" x 5" card indicating project.
35. Intermediate Sample Notebook - may be entered in all years. Notebook must include samples from beginning level and 3 new samples must be added each year. Samples must be attached to sample cards available from Extension Offices. Note project year the sample was made in upper right hand corner of card.
  10. Three seam finish samples - serged or hairline; French seam; clean finish
  11. Buttonhole and button - covered button; machine buttonhole with button
  12. Two zipper samples - centered: lapped
  13. Hem samples - machine blind hem stitch and hand blind hem stitch
  14. Matching stripe or plaid - horizontal match and one-way design fabric match
  15. Pleats - box and knife
  16. Dart samples - straight, curved, and double pointed darts
  17. Waistband sample
  18. Three Decorative Techniques: One of the following - flat braid, bias trim, rickrack, one decorative machine stitch; hand embroidery sample.

### **Advanced Level (ages 15-19)**

36. Fun Item - Two pieces of travel accessories such as jewelry case, shaving bag, etc.
37. Fun Item - Garment constructed from another textile product such as a blanket, towel, sheet.
38. Fun Item - **Recycled item (exhibit must include before picture & cost sheet attached)**
39. Fun Item - Embellished garment
40. Sample Notebook - May be entered all years. Notebook must have all samples from beginning and intermediate levels and 3 new samples must be added each year. Must be attached to sample cards available from extension office. Note project year the sample was made in upper right hand corner of card.
  19. Three seam finishes - Hong Kong, mock flat-fell, and stretch
  20. Bound buttonhole and button
  21. Covered snap and hook and eye
  22. Hand picked zipper sample
  23. Mock fly zipper sample
  24. Three hem samples - rolled hem, Hong Kong with blind hem stitch and mitered corner in hem
  25. Matching a stripe or plaid in chevron pattern
  26. Two lace applications - as a hem edge and as an insertion into fabric
  27. Three decorative techniques - 1. Select one of the following: piping, bias trim, bead edging, sequin strip; 2. machine appliqué; 3. picot edging
  28. Quick sewing techniques - button sewn by machine and stitch in the ditch
  29. Cuff attached in one step

## **FABRICS AND FASHIONS PERSONAL IMAGE EXHIBITS**

All posters must be 14" x 22" and must be permanently signed and dated on the back prior to laminating. Judging committee may mark or punch if not marked. Text of posters should be readable from at least 10 ft. away.

### **41. Beginning Level Poster (ages 9-11). Select one of the following topics:**

- a. Hair Care
- b. Personal Care
- c. Selection of Shoes
- d. What Clothing Says About a Culture

### **42. Intermediate Level Poster (ages 12-14). Select one of the following topics:**

- a. Effects and Use of Lines in Clothing Design
- b. Effects and Use of Color in Clothing Design
- c. Common Figure Types

### **43. Advanced Level Poster (ages 15 & older). Select one of the following topics:**

- a. Select an appropriate color combination for your complexion and develop a color palette for a working wardrobe. Tell why you chose this color combination in a one-page report attached to the poster.
- b. Identify personal body type and show examples of lines and colors appropriate for emphasizing positive features and de-emphasizing negative features. Explain selection in a one-page report attached to the poster.
- c. Identify a profession and an appropriate wardrobe for that profession. Attach a one-page report telling why each wardrobe item was selected.

## **FABRICS AND FASHIONS CONSUMER EDUCATION**

Posters must be 14" x 22" and must be permanently signed and dated on the back prior to laminating. Judging committee may mark or punch if not marked. Text of posters should be readable from at least 10 ft. away.

### **Beginning Level (ages 9-11 years)**

44. Poster illustrating the topic "Fashion vs. Fad." Use one item, listing cost and source.

### **Intermediate Level (ages 12-14 years)**

45. Poster collage illustrating wardrobe selections (\$200.00 or less) for one season (spring, summer, fall or winter). Attach a one page report on the back of the poster telling how much each item cost, where it was purchased and how it works into your existing wardrobe.

### **Advanced Level (Ages 15-19)**

46. Poster illustrating the topic "Price vs. Features vs. Name" Compare one item such as athletic shoes, rain gear, athletic equipment, linens, etc.

## TEXTILES SCIENCE AND CARE

Displays and posters should be permanently signed and dated on the back prior to laminating. Judging committee may mark or punch if not marked. Text of posters and displays should be readable from at least 10 ft. away.

47. **Beginning Level Poster** (ages 9-11 years)  
Choose one of the following topics for a 14" x 22" poster:
- Draw a garment care label, and identify or label the information printed on the label
  - Identify and explain basic laundry techniques.
  - Compare three different brands of one kind of laundry product (detergent, softeners, spot removers, etc.).
48. **Intermediate Level Educational Display** (12-14 Yrs)  
Choose one of the following topics for an educational display, 3' x 3' x 3':
- Sample of before and after stain removal treatment.
  - Characteristics, care and qualities of one natural fiber.
  - Three options for repairing a tear in the knee of a pair of jeans.
  - Before and after of organizing a closet and drawers.
49. **Advanced Level Educational Display** (ages 15-19)  
Choose one of the following topics for an educational display, 3'x3'x 3':
- Compare one natural and one synthetic fiber with a similar weave and color. Compare characteristics, noting appropriate and inappropriate uses.
  - Study, evaluate and report on the results of treating, cleaning, caring for, and using flame-retardant fabrics and/or clothing.
  - Illustrate the importance of care, cleaning, and storage of heirloom textiles or garments.
  - Choose your own topic, and create a display related to textiles and their care.

## HOME AND PERSONAL LIVING SPACE

### Beginning Level (Age 9-11 years)

50. **Waste Paper Basket**
51. **Wall hanging:** Fabric or textile base. Must be able to hang and utilize decorate textile technique, i.e., with appliqué, quilt blocks, quilted or pieced paint, team pennant.
52. **Hanging Storage Unit:** Textile or fabric base, used for storing any type of items, i.e., shoe holder, locker storage, closet, wall pocket, magazine holder, etc.
53. **Bulletin Board:** Decorated using textile craft technique.
54. **Desk Pad and two coordinating accessories.** Must be original handmade item.
55. **Home Environment Combination:** Three articles representing the color scheme of a room. All items must be handmade, finished or refinished, and/or decorated.  
**Examples:** Picture frame, pillow, & lined basket, Bulletin board, placemat, & recipe box; Waste basket, covered tissue box, & wall hanging; Or any other combination of three items

### Intermediate Level (Age 12-14 years)

56. **Wall hanging:** Fabric or textile base, must be able to hang and utilize decorated textile technique, i.e., with appliqué, quilt blocks, quilted or pieced, paint, team pennant, banner. Must incorporate hand or machine stitching.
57. **Hanging Storage Unit:** Textile or fabric base, used for storing any type of items, i.e., shoe holder, locker storage, closet, wall pocket or magazine holder. Must be machine stitched.
58. **Bulletin Board or Message Center:** Decorated using textile craft technique. Must incorporate two textile techniques; i.e., weaving, paint or stencil, covered with fabric, attached trim, etc.
59. **Desk pad and two coordinating accessories.** Must be original handmade item.
60. **Home Environment Combination:** Three articles representing the color scheme of a room. All items must be handmade, finished or refinished, and/or decorated.  
**Examples:** Covered album, pillow, lampshade, Tablecloth, placemat, chair cushion, Monogrammed towel, shower curtain, waste paper basket or any other combination of three items.
61. **Self-Determined:** Poster Board, Must be 14" x 22", may be three dimensional. Must include before and after photos, story, and cost on the face of the poster. Poster must be signed and dated on the back.  
Design a study area or computer center;  
Improve living space: i.e. Bedroom

### Advanced Level (ages 15 yrs. and over)

62. **Hanging Storage Unit:** Textile or fabric base, used for storing any type of items, i.e., shoe holder, locker storage, closet, wall pocket. Must be machine sewn item and incorporate decorative sewing technique, i.e., machine appliqué, ribbon or lace trim, lace application, etc.
63. **Desk Pad and three coordinating accessories.** Must be original handmade item.
64. **Home Environment Combination:** Three articles representing the color scheme of a room. All items must be handmade, finished or refinished, and/or decorated.  
**Examples:** Coverlet, pillow, lampshade, Tablecloth, placemat, chair cushion, Monogrammed towel, shower curtain, waste paper basket or any other combination of three items.

**SECTION 307  
BABYSITTING/CHILD CARE**

**Premiums:  
\$3, 2.50, 2, 1.50, 1, 1, 1, 1, 1, 1, 1**

**GUIDELINES:**

Refer to member and leader guides for ideas. Individual 4-H member can enter one exhibit per class but is restricted to those exhibits designed for his or her age group.

**UNIT ONE (Ages 9-13)**

**1. Baby Book**

Any practical size, minimum of 5 pages covering at least 9-10 months of development. Includes photographs, drawings mementos, and comments on developmental milestones. Must be clear that 4-H'er has contributed child development information to book. Baby books prepared earlier by parents may not be entered unless 4-H'er reworks the information. See Unit One, page 13. Do not confuse with class 4, Children's Book.

**2. Puzzles Help Children Learn**

Any size. Two (2) puzzles developmentally appropriate for children at two distinct age and ability levels. Each puzzle must have its own storage container. Puzzles must be sturdy and covered so they can be cleaned with damp cloth. Describe the child for whom each puzzle would be appropriate by giving child's age, interest, and ability. Puzzles should be suitable for either boys or girls. Do not indicate that a puzzle is for boys or girls only. See Unit One, page 13. Commercially made puzzles are not eligible.

**3. Good Guidance Poster**

Must be 14" x 22" and must be permanently signed and dated on the back prior to lamination. Judging committee may mark or punch if not marked. Text of poster should be visible for at least 10 ft. away. Illustrate techniques of positive guidance. Give reasons for not spanking or spoiling children. Include pictures and fact about child development. See Unit One, pages 14-15 and No. 706, Behavior and Guidance.

**UNIT TWO (Ages 14-19)**

**4. Children's Book**

Written, illustrated and constructed by 4-H'er. May be written for a specific child with text relating to that child or for children of certain age range. Indicate appropriate age range. Construction paper, computer print out, cloth or poster board may be used. Illustrations may be drawn, photographs, appliqués, magazine pictures or reassembled from other books. See no. 707, Books for Children. Do not confuse with Class 1, Baby Book.

**5. Surprise Suitcase**

Fill suitcase with homemade or store bought items for children you baby-sit. Could include books, puzzles, games, play dough, balls, costumes. Indicate appropriate age child to use each item. Include records of how children have responded to materials. Package in suitcase that can be taken to the home. See No. 722, Child Care Kit. May include commercial puzzles.

**SECTION 308  
4-H FOOD SCIENCE & NUTRITION EXHIBITS  
Premiums: \$3.50, 3, 2.50, 2, 1, 1, 1, .50, .50, .50, .50, .50**

**GUIDELINES:**

Individual 4-H members can enter one exhibit per class, but are restricted to those exhibits designed for his/her age group. Educational exhibits must fit 3' x 3' (width x depth) space, with sides extended. Exhibits must be freestanding with sides attached. Poster must be constructed on poster board 14" x 22". Posters and displays must be permanently signed and dated on the back prior to lamination. Judging committee may mark or punch if not marked. Text of posters and displays should be readable from at least 10 ft. away.

\* Criteria for evaluating educational displays and posters include:

Originality of Idea — 20 points  
Educational Value — 50 points  
Display Value — 30 points

- \* All food products must be on a paper plate and in a sealed plastic bag. The superintendent will only exhibit a slice of cake or bread and one cookie, muffin or roll of all exhibits and will dispose of all excess food.
- \* 4-H'ers may use recipes indicated in the food science manuals or any other recipe that fits the exhibit requirements. Cakes must be made from scratch using shortening mixing method (no angel food or chiffon-type). Bread machines may be used for the bread exhibits but bread must be made from scratch - no mixes.
- \* Dried foods should be exhibited in a sealed, plastic sandwich bag. Canned foods should be placed in colorless, standard canning jars such as those made by Kerr, Ball, etc., and properly sealed with two piece lids (no paraffin on jams and jellies.) Other types of jars will be rejected. Judges will remove the screw-bands at time of judging. Labels should be neat and plainly written. Jars of jams and jellies being considered for ribbons may be evaluated for taste in addition to traditional attributes.

## FOOD PREPARATION EXHIBITS

### LEVEL TWO - AGES 9-11

Class

1. Three (3) Muffins
2. Three (3) Rolled Biscuits
3. Three (3) Baked Drop Cookies (no shaped cookies such as snicker doodle or peanut butter)

### LEVEL THREE - AGES 12-14

4. One-half loaf of any yeast bread (not a sweet dough) made by hand or in a bread machine
5. Three (3) yeast cinnamon rolls (no icing)
6. Three (3) rolled sugar-type cookies (no gingerbread recipes)

### LEVEL FOUR - AGES 15 AND OVER

7. One-half loaf or portion of breads from another culture. Include a one-page story on how this bread fits into that culture and its nutritional contribution
8. One-half of one 8" layer Un-iced shorten type cake (no angel food or chiffon)

## FOOD PRESERVATION EXHIBITS

(Jar rings should be left on for display.)

### LEVEL TWO - AGES 9-11

9. One pint or half pint jar of jam or jelly processed in boiling water canner
10. Two pieces of fruit leather
11. One pint or half pint of salsa/picante sauce

### LEVEL THREE - AGES 12-14

12. One pint jar cucumber pickles or vegetable relish
13. One pint or quart of any single canned fruit (not pickled).
14. Dried Fruit (1/2 cup of a single dried fruit).

### LEVEL FOUR - AGES 15 AND OVER

15. One pint or quart jar pressure canned vegetables (no tomatoes or pickles)
16. One quart or one pint jar of plain canned tomatoes.

## 4-H FOOD SCIENCE & NUTRITION POSTER & EDUCATIONAL DISPLAYS

Posters and Educational Displays must be permanently signed and dated on the back prior to lamination. Judging committee may mark or punch if not marked. Text of posters and displays should be readable from at least 10 ft. away. Posters size is 14" X 22" and Educational Displays should be no larger than 3' X 3' (depth x width) and self standing.

## DIVERSITY EXHIBITS

Class

### LEVEL TWO AGES - 9-11

17. Educational poster based on breads or cheeses of another country or countries.

### LEVEL THREE & FOUR - AGES 12 & Over

18. Educational poster based on the foods from another culture. Can be based on a cultural celebration.

## NUTRITION EXHIBITS

### LEVEL TWO - AGES 9-11

19. Educational poster based on recipe modification for healthful eating

### LEVEL THREE - AGES 12-14

20. Educational poster based on the nutritional contributions of fruits and vegetables

### LEVEL FOUR - AGES 15 AND OVER

21. Educational display based on a recipe modification to include:  
Original recipe and what modifications were made; Benefits of the modifications; How did the modifications impact the above factors? and; What were other's responses to the modifications?

## FOOD OR KITCHEN SAFETY EXHIBITS

### LEVEL TWO - AGES 9-11

22. Educational poster based on food or kitchen safety

### LEVEL THREE - AGES 12-14

23. Educational poster based on protein food safety

### LEVEL FOUR - AGES 15 AND OVER

24. Educational poster based on outdoor cookery or grilling

## OTHER EXHIBITS

### LEVEL TWO - AGES 9-11

25. Educational poster illustrating a place setting for a specific occasion or menu

### LEVEL THREE - AGES 12-14

26. Educational display based on a breakfast bread buffet theme. Should include menu, buffet layout, decorations, invitations, and any additional information

### LEVEL FOUR - AGES 15 AND OVER

27. Educational poster based on careers in the food industry

**SECTION 309  
PERSONAL DEVELOPMENT**

**Premiums: \$3, 2.50, 2, 1.50, 1, 1, 1, 1, 1, 1, 1, 1**

**GUIDELINES:**

**Refer to leader's guide for guidelines and scorecard and to member's manuals for exhibit ideas. Fair book exhibit list overrides manuals.** Posters must be 14" x 22". Posters must be permanently signed and dated on the back. **DISREGARD POSTER SIZE GIVEN IN MANUALS.** Judging committee may mark or punch if not marked. Text of posters should be readable from at least 10 ft. away. Individual 4-H members can enter one exhibit in each class.

**UNIT ONE (Age 9)**

1. Heritage scrapbook
2. Things I Do Best Poster
3. Why I Am Healthy Poster

**UNIT TWO (Age 10)**

4. Heritage Scrapbook
5. Collage of Famous People Poster
6. Faces and Feelings Poster

**UNIT THREE (Age 11)**

7. Heritage Scrapbook
8. Career Opportunities Community Map
9. Personalized Newspaper, 17" x 22"

**UNIT Four (Age 12)**

10. Heritage Scrapbook
11. Careers of Interest Poster

**UNIT FIVE (Age 13)**

13. Heritage Scrapbook
14. Friendship poster, painting or collage, 14" x 22"
15. Newspaper Ad - about self, minimum size 8½" X 11", maximum 14" x 22"

**UNIT SIX (Age 14)**

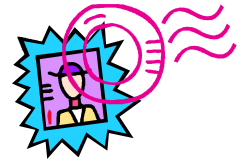
16. Heritage Scrapbook
17. Poster on adolescents' concerns, etiquette, character, or inter-generational relationships

**UNIT SEVEN (Ages 15 and older)**

18. Heritage Scrapbook
19. Poster on etiquette, character or inter-generational relationships

**LEISURE EDUCATION DIVISION  
SECTION 310  
4-H POSTMARK**

**Premiums: \$2.50, 2, 1.50 1, 1, 1, 1, 1, 1, 1, 1**



**GUIDELINES:**

- \* Books should be permanently labeled with exhibitor's name and county inside the front cover. This exhibit consists of postmarks, not stamps. Exhibits may be illustrated. All postmarks must be mounted on either 8½" x 11" note paper or photo album page of any color in a binder. All entries are limited to thirty (30) pages for the collection, plus an additional page for the objective of the collection. Plastic cover pages are acceptable to protect the mounts. Any class may be illustrated. The criteria for judging will be: (1) Appearance and neatness; (2) readability; (3) material relates to chosen topic; (4) brief written description telling purpose or objective of your collection.
- \* **NOTE: Metered postage marks must not be used in non-metered class exhibits and non-metered postmarks in metered classes.**
- \* Collections from a commercial source are not eligible for exhibit (i.e. through a postal society membership.) At least one-third of the postmarks in any collection must have been added during the current project year. **All entries must be clearly marked on the front cover or inside the front cover with the member's name and county.**
- \* 4-H'ers may enter one exhibit per class in their age group.

**Beginning Level  
(Ages 9-11):**

- Class
1. Postmark for 10 post offices in home county or surrounding area
  2. 30 Oklahoma postmarks
  3. 20 topical (any category)
  4. 25 Metered postage marks

**Intermediate Level  
(Ages 12-14):**

- Class
5. 30 hand cancelled
  6. 10-30 postmarks that tell a story
  7. 30 or more different slogans
  8. 30 topical (any category)
  9. 30 metered postage marks

**Advanced  
(ages 15 and over):**

- Class
10. 100 or more hand cancelled postmarks
  11. 30-75 postmarks that tell a story
  12. 50 or more different slogans
  13. 50 or more topical (any category)
  14. 50 metered postage marks

**SECTION 311**  
**4-H ELECTRIC EXHIBIT**

**Premiums: \$3, 2.50, 2, 1.50, 1, 1, 1, 1, 1, 1, 1**

**GUIDELINES:**

All exhibits must illustrate applications and utilize electrical energy. The exhibit must have been constructed by the exhibitor during the year exhibited and must meet electrical safety standards. All exhibits, except lamps will be judged on electrical wiring and connections, electrical components, usefulness of exhibit, working condition, complexity and design, appearance, originality, workmanship and safety. Lamps will be judged as described for each class. A 4-H member can have only one (1) exhibit in each class. Exhibits should be permanently signed and dated on the bottom or in an inconspicuous location. If not marked judges may mark or punched.

- 1. Electric projects (ages 9-11).** Entries to include electromagnets, motors, buzzers and direct current circuit boards.
- 2. Kit Lamps (Kit Construction) - All Ages**  
Electrical wiring and connections, light source, and suitability as a reading lamp will be judged. Lamps can be floor, desk or wall models.
- 3. Original Lamps - All Ages**  
Originality, workmanship, electrical wiring and connections, light source, and suitability as a reading lamp will be judged. Lamps can be floor, desk or wall models (no kits). Must have hand-wired plug.
- 4. Rewired Lamp - All Ages**  
Workmanship, craftsmanship and electrical wiring and connections will be judged. The lamp will not be judged as a reading lamp. Must have hand-wired plug.
- 5. Electric and Electronic Circuits - Ages 9-11**  
The exhibit should be mounted on a board and clearly show all circuits. The exhibit should be operational and demonstrate a useful principle or be functional.
- 6. Electric and Electronic Circuits - Ages 12 & over**  
The exhibit should be mounted on a board and clearly show all circuits. The exhibit should be operational and demonstrate a useful principle or be functional.
- 7. Exhibit - Ages 12 & over**  
Exhibit demonstrating skill or knowledge such as wire sizing; proper wiring of an electrical cord plug, wall outlet, wall switch, 3 way switch, etc.
- 8. Exhibit - Ages 12 & over**  
Exhibit of a wiring diagram for a home, other building, or electric supply system for a community.
- 9. Electronics/Lighting Selection Poster-Ages 12 & over**  
Poster (14" x 22"). Exhibit is on information that consumers might use in making a selection of any electronic devices such as computers, games, telephones, light fixtures, bulbs or other electronic device.

**SECTION 312**  
**MODEL ROCKETRY**

- \* Posters must be 14" x 22". Exhibitors are encouraged to laminate all posters or cover them with clear plastic film. Display boards should be limited to a maximum of 2' x 3' and must have a single ¼" hole drilled at the top center of board to allow for display. **NO LIVE ROCKET ENGINES WILL BE ALLOWED IN ANY EXHIBIT.** Text of posters or displays should be readable from at least 10 ft. away.
- \* Homemade rockets could be dangerous to fly. Model rockets, posters, and displays should be permanently signed and dated in an inconspicuous location. If not marked the judging committee may mark or punch exhibits.
- \* 4-H members can enter only one exhibit in each class.
- \* Attach a 3" x 5" index card to each rocket, explaining: Construction material, how constructed and goal of project; Year in project; Age of member; Whether or not made from kit; Other pertinent information

**CLASS**

**Junior Division (9-13 years)**

1. Poster showing the parts of a model rocket, with an explanation of the purpose of each part.
2. Poster explaining the function of the model rocket engine
3. Poster showing one or more points from model rocketry safety code.
4. Model Rocket made from a kit. Must be safe and functional for flight.
5. Model Rocket designed and built by exhibitor. Must be safe and functional for flight.
6. Poster on any other topic pertaining to model rocketry project.

**Senior Division (14 years and older)**

7. Poster or display showing the parts of a model rocket, with an explanation of the purpose of each part.
8. Poster or display explaining the function of the model rocket engine.
9. Poster or display showing one or more points from model rocketry safety code.
10. Model Rocket made from a kit. Must be safe and functional for flight.
11. Model Rocket designed and built by exhibitor. Must be safe and functional for flight.

## **SECTION 313**

### **4-H WOODWORK PROJECTS**

- \* These exhibits should demonstrate a project experience which emphasizes the development of woodworking skills, such as: sawing, sanding, planning, alignment of joints, neat use of fasteners (nails, screws, etc.), and careful application of finishes. Judging will focus on the evidence of these skills.
- \* These exhibits will consist of articles made by 4-H Club members the past year. The project is not limited to current project idea sheets. It must be proportional; functional; and include the same techniques as the listed classes. Miscellaneous and refinished class items should be similar in size to the exhibits in the classes listed for the age division.
- \* 4-H members can enter one (1) exhibit per class, but is restricted to exhibits designed for his or her age group. Woodworking exhibits should be permanently signed and dated in an inconspicuous location. If not marked judge may mark.

Class

#### **Beginning Level (ages 9-11)**

1. Wall mounted rack for hot pads, ties, paper towels or other wall mounted item
2. Puzzle or game
3. Spice, what-not or other small shelves
4. Book ends
5. Miscellaneous

#### **Intermediate Level (ages 12-14)**

6. Book case or entertainment center (without doors)
7. Gun, baseball bat, fishing rod or similar rack
8. Refinished item - attach before picture & story with history of item, cost sheet, and description of process used
9. Miscellaneous

#### **Advanced (ages 15 and older)**

10. Gun, curio or display cabinet (with doors)
11. Table
12. Chest
13. Miscellaneous
14. Refinished item - attach before picture & story with history of item, cost sheet, and description of process used.

**SECTION 314  
SHOOTING SPORTS**

**Premiums:**

**\$2.50, 1.50, 1, 1, 1, 1, 1, 1, 1, 1, 1, 1,**

**GUIDELINES:**

- \* **No live ammunition, actual firearms or parts of firearm that could be reassembled should be included. Any manufactured part of a sporting arm may not be displayed.** An explanation must be attached to or included on each exhibit describing the subject and what is being illustrated. The 4-H member's name, and age must be included with the exhibit. Exhibits deemed to be inappropriate will not be displayed. Exhibits suggested but not limited to posters, educational displays, journals, slings, quivers, gun stocks, decoys and equipment.
- \* All exhibits will be judged on the basis of instructions and standards explained in the **Oklahoma "4-H Shooting Sports Exhibit Preparation Guidelines Leaders/Members Guide" #690 (1/2007)** which is available through the County Extension Office and on the Oklahoma State 4-H Website in "Literature on-line".
- \* Posters must be 14" x 22". For display purposes, exhibitors are encouraged to laminate all posters or cover them with clear plastic film. Posters must be permanently signed and dated on the back. If not marked the judging committee may mark or punch. Posters may be horizontal or vertical. Text of poster should be readable from at least 10 ft. away.
- \* Educational display must be three dimensional should be mounted on a freestanding display board not to exceed 36" x 36" (width x depth) when the sides are extended for display. Commercially available "Science Fair Presentation Boards" are recommended.
- \* **If you use text, pictures, drawings, artwork or other information not created by you in your exhibit you must cite the source.**

**Junior Division (ages 9-13)**

An explanation must be attached to and /or included in each exhibit listed below describing the subject and what is being illustrated.

Class

01. SHOOTING SPORTS SAFETY: any related item made
02. ARCHERY: any related item made
03. AIR PISTOL: any related item made
04. AIR RIFLE: any related item made
05. .22 RIFLE: any related item made
06. SHOTGUN: any related item made
07. HUNTING AND WILDLIFE: any related item made (May include tanned hides, dried and mounted wings, cleaned skulls or other wildlife parts preserved by the 4-H member. Full taxidermy style mounts will not be accepted due to limited space)
08. LIVING HISTORY: any related item made

**Senior Division (ages 14 and over)**

An explanation must be attached to and /or included in each exhibit listed below describing the subject and what is being illustrated.

Class

09. SHOOTING SPORTS SAFETY: any related item made
10. ARCHERY: any related item made
11. AIR PISTOL: any related item made
12. AIR RIFLE: any related item made
13. .22 PISTOL: any related item made
14. .22 RIFLE: any related item made
15. SHOTGUN: any related item made
16. MUZZLELOADING: any related item made
17. HUNTING AND WILDLIFE: any item related made (May include tanned hides, dried and mounted wings, cleaned skulls or other wildlife parts preserved by the 4-H member. Full taxidermy style mounts will not be accepted due to limited space)
18. LIVING HISTORY: any related item made.

**NATURAL SCIENCES DIVISION**  
**SECTION 315**  
**ENTOMOLOGY - 4-H INSECT EXHIBITS**  
**Premiums: \$3, 2.50, 2, 1.50, 1, 1, 1, 1, 1, 1, 1**

**GUIDELINES:**

- \* The exhibits in entomology are planned to be progressively more difficult. The specific age of exhibitors does not appear in the entomology section for this reason. Refer to 4-H entomology member guides 1-6 for more detail regarding fair exhibits.
- \* A 4-H member may enter only one insect exhibit in Entomology (first year through fifth year). Exhibits in the first through fifth year are allowed a maximum of five (5) foreign and/or out-of state collected insects (no restrictions on self-determined exhibit). All insects must be mounted on standard insect pins. Each insect should be identified by their common name using the correct spelling. Exhibits collections for classes 1 thru 5 are allowed a maximum of five (5) foreign and/or out of state collections.
- \* Exhibits in Classes 2-5 must be in standard insect display boxes. Specifications for the standard insect box are available at the OSU County Extension Office. At least one-third of the specimens in any collection must have been collected during the current project year.

Class

- 1. First Year** - The exhibit shall consist of 25 adult insects (representing at least 5 orders) which are displayed in a box approximately 2.5"x 5.5"x 8.5". Cover with plastic wrap or rigid plastic. Nine and ten year old exhibitors entering class one may be allowed to enter class one a second year, if the exhibit did not place in the top five at the State Fair the previous year, as long as modifications are made to the exhibit.
- 2. Second Year** - The second year exhibit shall consist of 40 adult insects (representing 8-10 orders) which are displayed in the standard insect display box.
- 3. Third Year** - The third year exhibit shall consist of 75 adult insects (representing 10-12 orders) which are displayed in the standard insect display box.
- 4. Fourth Year** - The fourth year exhibit shall consist of 100 adult insects (representing 13-16 orders) which are displayed in the standard insect display box.
- 5. Fifth Year and Beyond** - The exhibit shall consist of 130 adult insects (representing 17-21 orders) which are displayed in the standard insect display box. There is no limit on the number of years this class may be entered, if exhibit has additions or major modifications.
- 6. Self-Determined Entomology Exhibit/Collections** - Designed to allow exhibitors to prepare displays indicating expanded interest beyond the requirements of collections exhibited in previous years. Exhibits should be of an educational nature, attractive in design and easy to understand. A written report explaining the nature or purpose of the project must accompany the exhibit. Participants in this class are also allowed to have an entry in one of the first through fifth year classes. There is no limit on the number of years that one can enter the advanced class. Exhibitors can continue to exhibit in the self-determined class as long as new exhibits are entered or if major revisions are made on a previous exhibit.

**4-H HONEY EXHIBIT**

Only one exhibit allowed in each class per individual.

- \* Honey should be placed in colorless, one-pint honey jars or standard, colorless one-pint fruit jars such as those made by Kerr, Ball, Mason, etc. Other types of jars will be rejected. Jar covers should be new if possible and should be screwed on tightly to prevent leakage. There should be ¼"-½" air space below the lid.
  - \* Honey should be clear and free from foreign particles.
  - \* Chunk honey should be perfectly capped, free from stains, bee-bread and finger prints. Edges should be clean-cut, not ragged. One piece only in each jar; as wide as jar mouth will permit and long enough to extend from the bottom to the top without jamming.
  - \* Labels should be neat and plainly written.
7. **Comb Honey**, one pint jar
  8. **Extracted Honey**, one pint jar

## SECTION 316

### 4-H FORESTRY

Premiums: \$2.50, 2, 1.50, 1, 1, 1, 1, 1, 1, 1, 1

#### GUIDELINES:

A member may enter one exhibit per class but is restricted to only those exhibits designed for his or her age group.

**FORESTRY BOARDS AND EXHIBITS MUST BE SIGNED AND DATED ON THE BACK BY THE EXHIBITOR.**

**Two holes 1/2 inch in diameter and 1 inch from the top should be drilled in wood boards to facilitate displaying the exhibit.**

#### TREE LEAF EXHIBIT

**PLEASE NOTE:** Exhibit must conform to all requirements, including labeling & display requirements, outlined in 4-H fact sheet #236 "Collecting and Exhibiting Tree leaves" (revised 9/07)

Class

1. **Ages 9-11 years. Collection of 10 leaves from trees native to Oklahoma** (no introduced species). One specimen must be from a native evergreen - pine or juniper. Include a twig & buds with each broadleaf specimen. Exhibit must be properly labeled and displayed on board 22" wide and 28" tall.
2. **Ages 12-15 years. Collection of 15 leaf specimens, representing at least three of the five basic leaf types, from trees native to Oklahoma** (no introduced species). Two specimens must be from native awl or scale-leaf evergreen -- pine or juniper. Non-native species are acceptable only if they have been introduced for planting windbreaks and shelterbelts. Include a twig with buds with each broadleaf specimen. Exhibit must be properly labeled and displayed on board 28" tall and 44" wide. Two 28" x 22" boards hinged in the middle are more portable.
3. **Ages 16 & over. Collection of 20 leaf specimens, representing four of the five basic leaf types, from trees native to Oklahoma.** Three specimens must be from needle, scale or awl-leaf evergreens. Species of pine not native to Oklahoma are acceptable if they have been introduced for planting windbreaks and shelterbelts. The palmate leaf sample must come from a native Oklahoma species.

#### WOOD SAMPLE EXHIBIT

Wood sample exhibits should conform to instructions outlined by age group in Oklahoma 4-H **Fact Sheet #238 "Wood Sample Exhibits"** (revised 2/2007).

Class

4. **Ages 9-11 years.** The exhibit shall consist of six (6) wood samples (3 hardwoods and 3 softwoods) mounted on plywood 1/4" thick x 22" wide x 20" high.
5. **Ages 12-15 years.** The exhibit shall consist of eight (8) wood samples (4 hardwoods and 4 softwoods) mounted on plywood 1/4" thick x 22" wide x 20" high.
6. **Ages 16 years and over.** The exhibit shall consist of eight (8) wood samples (4 hardwoods and 4 softwoods) each of which shows the end, edge, and surface grain displayed on a board 1/4" thick x 22" wide x 20" high.

#### SELF-DETERMINED EXHIBIT

- \* **PLEASE NOTE:** Open to 4-H members of all ages. Exhibit suggestions are listed in 4-H Member's Guide "4-H Forestry Self-Determined Exhibits" (Pub. #239) (revised 03/05).
- \* This exhibit shall consist of a poster, model, or any one of a great number of other creative efforts by the club member which relates to the science and technology of forestry or is otherwise directly related to forestry. If display not to exceed 36"x 36" (depth x width) or poster not to exceed 14" x 22."

Class

7. **Self Determined Exhibit** - Ages 9-13
8. **Self Determined Exhibit** - Ages 14 and Older

## SECTION 317

### GEOLOGY

#### Premiums:

**\$2.50, 2, 1.50, 1, 1, 1, 1, 1, 1, 1, 1, 1**

#### GUIDELINES:

Any eligible 4-H member may participate in collecting, identifying and preparing a rock-mineral-fossil exhibit or preparing an energy and petroleum exhibit.

**Rock-mineral-fossil** exhibitors should securely mount their specimens in a wooden display case with a glass cover. Display box is to be a standard 18" x 24" 3/4", the same type display cases as for Entomology. Class 1 may be displayed on 18" x 24" plywood or stiff cardboard that has been made suitable for hanging, although a box is recommended. Each sample should be mounted and labeled in a neat, orderly manner. Labels should include common name, date, location found and mineral use. At least one-third of the specimens in any collection must have been added during the current project year.

#### Class

1. Fifteen (15) different unpolished rocks, minerals or fossils collected from Oklahoma.
2. Thirty (30) different unpolished rocks, minerals or fossils, including specimens of sedimentary, igneous and metamorphic.
3. Open Class - Educational exhibit depicting some phase of geology, testing of minerals, polished rocks, etc. (Display should not exceed 24" x 24".)

**Energy/petroleum exhibits.** Posters must be on 14" x 22" poster board. Each must be signed and dated on the back in permanent marker prior to laminating. Judging committee may mark or punch if not marked. Text of posters and displays should be readable from at least 10 ft. away. Displays should be self standing and not bigger than 3' x 3' (width x depth) when sides are extended.

#### Junior Division (Ages 9-12)

4. **Poster on well site safety**
5. **Energy/Petroleum Display.** Subject of the display should be petroleum products; different types of energy and how they work; or different careers in energy.
6. **Energy or Petroleum Science Experimental Display (Science-Fair type.)** 4-H members are encouraged to (a.) use their 4-H projects as the basis for their scientific research and discovery; (b.) use the scientific method to gain an understanding of how things work and the variables that affect them; (c.) take an open and creative approach to problem solving; d. learn that a successful outcome is based not on personal opinion but on scientific fact; & (d.) use written and visual communication skills.

#### Intermediate Division (Ages 13-14)

7. **Photography Exhibit over a state park or geological region.** Four photos mounted on 14" x 14" poster board with detailed explanations and information.
8. **Poster on Water Mineral Issue.** Subject of poster should be one of the following:  
⇒What water hardness and mineral testing can determine; Secondary recovery methods; Dangers of lead in the water
9. **Energy or Petroleum Science Experimental Display (Science-Fair type.)** 4-H members are encouraged to (a.) use their 4-H projects as the basis for their scientific research and discovery; (b.) use the scientific method to gain an understanding of how things work and the variables that affect them; (c.) take an open and creative approach to problem solving; d. learn that a successful outcome is based not on personal opinion but on scientific fact; & (d.) use written and visual communication skills.

#### Senior Division (Ages 15 and over)

10. **Poster of a press release;** collected about the energy information and your interpretation; possibly the Energy Index or other Topic.
11. **Energy or Petroleum Display.** Subject of the display should be areas of the Oklahoma Energy Index; different drilling techniques and how they work; or careers in the energy industry.
12. **Energy or Petroleum Science Experimental Display (Science-Fair type.)** 4-H members are encouraged to (a.) use their 4-H projects as the basis for their scientific research and discovery; (b.) use the scientific method to gain an understanding of how things work and the variables that affect them; (c.) take an open and creative approach to problem solving; (d.) learn that a successful outcome is based not on personal opinion but on scientific fact; & (e.) use written and visual communication skills.

**SECTION 318**  
**4-H WILDLIFE PROJECTS**  
**Premiums: \$2, 1.50, 1, 1, 1, 1, 1, 1, 1, 1, 1**

**GUIDELINES:**

Only one exhibit will be allowed in each class per individual.  
Individuals may enter only in their respective age category.

All exhibits will be judged on the basis of instructions and standards explained in the "**4-H Wildlife Project Exhibit Preparation Guidelines**" (#720; revised 12/06) which is available from the County Extension Office or on the Oklahoma 4-H Website under "Literature Online."

**Self Determined Exhibits** - To encourage members to develop their own learning projects, a self determined exhibit class is included in each category. For ideas and guidelines for exhibits, please see 4-H publication #721 "4-H Wildlife Self Determined Projects" (revised 12/06) and 4H NREM 625 Creating a wildlife Resource Map. Text of posters should be readable at least 10 ft. away. Include references for information. At least one reference must be from a source other than the internet.

All 4-H exhibits should be the original work of the 4-H member. When information is taken from books, publications, magazines, or from the internet it should be expressed in the 4-H members own words. The 4-H member must reference the source of the information by using an asterisk (\*) or a number (if more than one) and name the actual source at the end or bottom of paper, poster or educational display following an asterisk or corresponding number in text.

No copyrighted or trademark protected written or visual material (pictures, photos, drawings, illustrations, etc.) should be used from books, magazines, publications or from the internet with out permission from the original creator. If 4-H'er applies for and is granted permission to use a copyrighted or trademark protected item, a copy of the permission form or letter needs to be attached to the back of the exhibit and properly cited with an asterisk (\*) or number. If an item (picture, photo drawing, illustration, etc.) that is not protected is used its source must be cited and referenced by using an asterisk (\*) or number and the source information placed at the end or bottom of paper, poster, or educational display, following an asterisk or corresponding number.

All posters, resource maps and displays must be permanently signed and dated on the back. If not marked the judging committee may mark or punch. Text of posters or educational displays should be readable from at least 10 ft. away. All exhibits on boards must have hangers. Eye screws and wire preferred. No saw-toothed hangers.

**OKLAHOMA WILDLIFE**

Exhibits entered in this section should relate to a specific category of game or non-game animals or birds.

**Junior (ages 9-13)**

1. (A) **A collection of fifteen (15) different kinds of plants, trees or shrubs known to provide food or cover for wildlife, mounted on food and cover cards** or (B) a **seed board** with **fifteen (15)** different kinds of seeds eaten by wildlife. **(See 4-H Lit. #720 updated 12/06.)** No more than four (4) varieties may be cultivated crops. All of the specimens must have been collected during the current project year. For each plant or seed included list one (1) wildlife species that use that plant or seed (on the cover card or board). All plant species must be native to Oklahoma except that up to four (4) of the plants (or seeds) may be from cultivated crops.
2. **Scrapbook of Oklahoma Wildlife** (cutouts, pictures or drawings) of at least five (5) mammals, five (5) birds and five (5) reptiles or amphibians. Give common name and what habitat they can be found in. Common names should be specific (i.e. black rat snake, pygmy rattlesnake, etc.)
3. **Exhibit of the tracks of eight (8) wild animals or birds** commonly found in Oklahoma. **POSITIVE** plaster casts should be mounted on masonite or plywood, not to exceed 12" x 24". Label each track with kind of animal or bird, county track was found in, habitat it was found in, and the date the track was cast.
4. **Self Determined Exhibit.** Posters must be 14" x 22". Displays must not exceed 3' X 3' (width x depth). Possible examples include but not limited to: a display dealing with methods of identification of waterfowl, a poster on wildlife, or environmental careers. **See Lit, #721 "Self Determined 4-H Wildlife and Fisheries Project Ideas" for additional examples.**

## OKLAHOMA WILDLIFE Continued...

### Senior (ages 14 thru 18)

5. **A collection of thirty (30) plants known to furnish food or cover for wildlife**, mounted on food and cover cards or (B) a seed board with **thirty (30) plant seeds** known to furnish food or cover for wildlife. No more than six (6) varieties may be cultivated crops. At least half of the specimens must have been collected during the current project year. For each plant or seed include three (3) wildlife species that use that plant or seed (on the cover card or board). Species names must be used for both plants and wildlife in addition to the common name. All species must be native to Oklahoma except that up to six (6) may be from cultivated crops.
6. **Evaluation of an Oklahoma habitat type** that includes a general description of the habitat plant and animal species (species names must be used for plants and wildlife in addition to the common names) that occur within the habitat; a range map showing the habitat's distribution within Oklahoma; and threats to that habitat. Examples of possible habitats include: playa lakes, tallgrass prairie, cross timbers, and shortgrass prairie.
7. **Self Determined Exhibit**. Posters must be 14" x 22". Displays must not exceed 3' X 3' (depth x width). Possible examples include but are not limited to: description of a Wildlife Management Area detailing area, location, habitat, management, and wildlife population trends (if known); or a poster with an emphasis on the life cycle, status, range map, and habitat of an Oklahoman threatened or endangered species. Species names must be used for plants and wildlife in addition to common names. **See Lit. #721 "Self Determined 4-H Wildlife and Fisheries Project Ideas" revised 12/06 for additional examples.**

## 4-H FISHERIES

### Junior (ages 9-13 year olds)

8. **Display board showing steps in tying two kinds of fishing knot** used in tying lines or leaders. Use cord instead of fishing line. Mount on board suitable for hanging, not to exceed 12" x 12".
9. **Notebook describing habits and appearance of five (5) fishes found in Oklahoma**. Information on each fish to include photo, drawing or cut-out picture, proper common name, kind of food eaten, distinctive physical characteristics, best ways to catch and other topics of interest to anglers.
10. **Display of five (5) member assembled lures**, together with the materials from which they were assembled, mounted on a board not to exceed 12" x 16". Lures may be spinners, jigs, flies, plugs or a combination of these. May be entirely homemade or assembled from purchased supplies.
11. **Self Determined Fish Project**. Educational report, display or project created by the member. Topic to deal with fish, fishing, fish farming, aquatic food chains or pollution in Oklahoma waters. Displays not to exceed 36" x 36" (width x depth) with sides extended. Posters must be 14" x 22".

### Senior (ages 14-18 year olds)

12. **Notebook describing habits and appearance of ten (10) fishes found in Oklahoma**. Information on each fish to include photo, drawing or cut-out picture, proper common name, kind of food eaten, distinctive physical characteristics, best ways to catch and other topics of interest to anglers.
13. **Display of five (5) fishing flies tied by the exhibitor**. The material and shape of the exhibit will be exhibitor's choice, but cannot exceed 12" x 12" in size. Attach report to exhibit to indicate the following about each fly on the board: type of fly, type of fish it is used to catch, habitat conditions it is used in and cost to purchase or make.
14. **Display of five (5) fishing lures**. Lures may be any type commonly used in sport fishing. The material and shape of the exhibit board will be exhibitor's choice, but cannot exceed 12" x 12". Attach report to exhibit to indicate the following about each lure on the board: type of lure, type of fish it is used to catch, habitat conditions it is used in and cost to purchase or make.
15. **Self Determined Fish Project**. Educational report, display or project created by the member. Topic to deal with fish, fishing, fish farming, aquatic food chains or pollution in Oklahoma waters. Displays not to exceed 36" x 36" (width x depth) with sides extended. Posters must be 14" x 22".

## 4-H BIRD

The following OK 4-H online publications would be excellent resources along with those listed in exhibit text for learning more about birds and birding: 4-H NREM 620 "Bird Watching-A Beginning"; 4-H NREM 621 "Using Binoculars"; and 4-H NREM 622 "I Think It Is A..." (#622 contains a list of additional resources)

### Junior (ages 9-13 year olds)

16. **Display of a home constructed bird feeder** (may be from a kit), must include a 3" x 5" index card tacked to the feeder with the following information: 1) What species was it constructed for; and 2) What habitat and site location (should include height) it be placed in. Should be functional and not decorative.
17. **Display of a single unit bird house, home constructed** (may be from a kit) with a 3" x 5" index card tacked to the house with the following information: (1) What bird species was house constructed for and (2) What habitat and site location (should include height) the house will be placed in. Should be functional and not decorative.
18. **Notebook of fifteen (15) pictures, drawings or photos of birds** seen and identified by member and labeled with common name of each.
19. **Self Determined Poster** (14" x 22"). See "**Self Determined 4-H Wildlife & Fisheries Project Ideas**" Oklahoma 4-H Pub. # 721 (revised 12/06) for ideas. See 4-H Wildlife Project Lit #720 "Exhibit Preparation Guidelines Leaders/Members Guide" (revised 12/06) for guidelines.
20. **Observation report for Bird Feeder** used during previous year, including photo of feeder at location used. ("Bird Feeding Station Report" #723 found on OK 4-H Lit. On-line under Wildlife & Fisheries). May use feeder constructed or a purchased feeder.
21. **Observation report for Bird House** used during the previous year, including photo of house at location used ("Bird Observation Report" #724 found on OK 4-H Lit. On-line under Wildlife & Fisheries). May use birdhouse constructed or a purchased house.

### Senior (Ages 14-18 years of age)

22. **Bird habitat improvement exhibit.** Notebook of pictures or drawings explaining how exhibitor is developing or improving a bird habitat. This exhibit may be added to or continued from year to year as the habitat improvements are implemented.
23. **Notebook of bird, feeder or nest observation records for more than current year.** Include some analysis of comparisons in observations for years observed. (Observation reports are found on OK 4-H Lit. On-line under Wildlife & Fisheries-"Bird and Nest Observation" #722; "Bird Feeding Station" #723; and Bird Observation; #724).
24. **Self Determined Bird Project.** If poster must be 14" x 22". If display must not exceed 3' X 3' (width x depth). See "Self Determined 4-H Wildlife & Fisheries Project Ideas" Oklahoma 4-H Pub. #721 for ideas. See 4-H Wildlife Project Lit #720 "Exhibit Preparation Guidelines Leaders/Members Guide" for guidelines.

## 4-H WILDFLOWER STUDY

- \* At least one-third of the specimens must have been collected during the current project year.
  - \* See information on pressing plants in "Leaf Pressing and Collecting Hints" 4-H publication #237 to prepare plants for collections and exhibits.
  - \* Posters should be hand generated and not down-loaded from internet or computer.
- "Wildflower Card" (OK 4-H Lit. # 718) can be downloaded from OK 4-H Lit. on-line under Wildlife & Fisheries. Please print form on card stock or heavy paper and hole punch.*

### Junior (ages 9-13 year olds)

25. **Collection of eighteen (18) Oklahoma wildflowers** properly pressed and mounted on wildflower cards. Label with common name flower family and tell location and date collected. Display in a notebook.
26. **Drawing or diagram showing parts of a wildflower blossom**, not to exceed 8 ½" x 11".
27. **Self Determined poster** (14" x 22"). See "Self Determined 4-H Wildlife & Fisheries Project Ideas" Oklahoma 4-H Pub. # 721 (revised 12/06) for ideas. See 4-H Wildlife Project Lit #720 "Exhibit Preparation Guidelines Leaders/Members Guide" (revised 12/06) for guidelines.
28. **Display two (2) principle wildflower families showing four (4) or more pressed flowers** of each family labeled with common name. A brief description of each flower family should be included. If poster must be 14" x 22" or display in a notebook.
29. **Make a collection, mount and press, the leaves of plants** showing leaf arrangements (opposite, alternate and whorled); types of leaves (simple, pinnately compound, palmately compound); leaf margins (toothed, smooth and lobed.) If poster must be 14" x 22" or display in notebook on card stock pages or wildflower cards (Lit. #718).

### Senior (ages 14-18 year olds)

30. **Collection of twenty five (25) Oklahoma wild flowers** properly pressed and mounted on wildflower cards. Label with common name, scientific name, flower family, location collected, date collected and habitat collected from. Display in a notebook.
31. **Make a collection and mount for display at least fifteen (15) kinds of wild flower seed** that show various adaptations to dispersal by wind, water, birds and mammals.
32. **Special collections.** Collection of specimens in some special category, i.e. one (1) family, poisonous, dyes, edibles or specific season such as early spring. If poster must be 14" x 22" or display in a notebook.
33. **Self Determined Exhibit.** If poster must be 14" x 22". Display must not exceed 3' X 3' (depth x width). See "Self Determined 4-H Wildlife & Fisheries Project Ideas" Oklahoma 4-H Pub. #721 for ideas. See 4-H Wildlife Project Lit #720 "Exhibit Preparation Guidelines Leaders/Members Guide" for guidelines.

**SECTION 319**  
**ENVIRONMENTAL STEWARDSHIP**  
**Premiums: \$2, 1.50, 1, 1, 1, 1, 1, 1, 1, 1, 1**  
**GUIDELINES:**

- \* A 4-H member may enter one exhibit per class, but is restricted to those exhibits designed for his/her age group.
- \* Exhibits will be judged based on the criteria outlined in the 4-H project fact sheets available from the County Extension Office. Text of posters should be readable at least 10 ft. away. Include references for information. At least one reference must be from a source other than the internet. Posters must not be printed directly from the internet—this is plagiarism.
- \* Each piece of exhibits containing more than one item must be labeled with exhibitor's name and county. Posters must be signed and dated on the back.

Class

1. **Vermi-Composting (with Worms)**. (Ages 9-13) Compost sample and poster that explains how to compost with worms. Must include report for one or more of the following areas: bins for vermi-composting, feeding and care, moisture requirements, harvesting compost. Poster must be on 14" x 22" poster board and must include a photograph of your compost bin. One pint of compost (worm castings) in a sandwich-size zip-lock bag or pint jar with lid must be included.
2. **Exploring Streams and Lakes Poster** (Ages 9-13) Poster (14" x 22") with photos showing a stream, lake or pond you have visited. Photos should show things like shorelines or creek banks, appearance of the water, condition of vegetation on the shore or banks, and problem areas such as erosion, trash or obvious pollution. For more ideas read Lit. #19 "Water Quality of Streams and Lakes" Related report form is #20. Each photo must have a caption explaining what it shows. Overall, the poster should tell what you think is helping or harming the water or the plants and animals that live there. Members entering this project for 2<sup>nd</sup> or 3<sup>rd</sup> year should compare changes over time or season. Poster title should include name of water body, if it has one, and town or county where located.
3. **Water Critters** (Ages 9-13)  
Display a collection of pond, lake or stream critters (no fish) preserved in one to three baby food jars with rubbing alcohol as described in Lit. #21 "Aquatic Organism". Securely attach a completed Critter ID bookmark (Lit. #29 "Stream and Lake Critter Identification") to the jar using tape and a string around the jar neck. Do not include more than one of each type of critter. Collect only critters found on or in the water, not adult flies. Write a short paragraph telling about the value of water critters - read and summarize in your own words lit. #21 or related materials. Optional: Include one single-sided page of labeled photos or drawings of the site or collecting activity.
4. **Where Does My Water Come From Poster** (Ages 9-11) (14" x 22") showing or describing the source of your water (lake, aquifer, private well) and/or what is done to it before (water treatment plant, in home filtration system) it gets to your home. See Lit #19 "Water Quality of Streams" for ideas.
5. **Natural Resources of My county Poster** (Ages 9-13) Poster (14"x22") with your photos showing a mixture of local natural resources like prairies, forests, scenic views, water bodies, agriculture, wildlife or similar things. Each photo must have a caption naming the resource. Overall, the poster should convince the reader that your county is a great place to live. Poster title should be at least 1 inch tall and include name of your county.
6. **Recycled Item** (Ages 9-11) - **useable item made from trash** other than craft item. Original ideas and useful items will be ranked higher. Attach 3" x 5" card listing all materials used.
7. **Aquatic Habitat Poster** (Ages 12-14)  
(14" x 22") with photos showing a stream, lake or pond you have visited. Photos should illustrate distinct habitats such as shoreline vegetation, undercut banks, rocky shores, riffles, pools or runs. Each photo must have a caption explaining what it shows. For more ideas read Lit. #21 "Aquatic Organism". Overall, the poster should comment on things you observed that could be helping or harming the critters or their habitat. Members entering this project for 2<sup>nd</sup> or 3<sup>rd</sup> year should compare changes over time or season. Poster title should include name of water body, if it has one, and town or county where located.
8. **Homemade stream or lake sampling equipment** (Ages 12-14) - Display one piece of stream or lake sampling equipment that you have made. Write a one-page report explaining its purpose and how to use it. Some possibilities include secchi disks, plankton tows, deep water samplers, and kick nets. See TVA booklet, "Homemade Sampling Equipment" for instructions on how to make equipment. Optional: Include one single-sided page of labeled photos or drawings showing equipment in use.
9. **What Is A Watershed?** - Poster (Ages 12-14)  
(14" x 22") Describe what watersheds are and how they work. Title must contain the word, "watershed". See Literature #24 "Understanding Human Impact on Streams" for ideas.
10. **Natural Resources of My county Poster** (Ages 14-18) Poster (14"x22") with your photos showing a mixture of local natural resources like prairies, forests, scenic views, water bodies, agriculture, wildlife or similar things. Each photo must have a caption naming the resource. Overall, the poster should convince the reader that your county is a great place to live. Poster title should be at least 1 inch tall and include name of your county.

11. **Stream, Pond or Lake Poster** (Ages 14-18)  
(14" x 22") Photos showing a stream, pond or lake you have visited. Poster should show things people have done or might do, along the shore or in the watershed that can harm this stream, pond or lake. For ideas read Literature #'s 21 & 24. Poster title must include name of water body and town or county where located.
12. **Water Critters** (Ages 14-18)  
Display a collection of pond, lake or stream critters (no fish) preserved in baby food jars with rubbing alcohol as described in Lit. #21 "Aquatic Organism". Collect in only one water body. Separate critters from different habitats into different jars, labeled with habitat name. Do not include more than one of each type of critter in each collection jar. Collect only critters found on or in the water, not adult flies. Write a 1-page report on three of your critters explaining how they are adapted to their habitat. Read Lit. #21 "Aquatic Organism" for ideas. Use the Bookmark Critter ID rating form instructions (Lit. #29) to calculate the water quality rating for your water body and include results in your report.
13. **Homemade stream or lake sampling equipment** (Ages 15-18)  
Display one piece of stream or lake sampling equipment that you have made. Write a one-page report explaining its purpose and how to use it. Some possibilities include secchi disks, plankton tows, deep water samplers, and kick nets. See TVA booklet, "Homemade Sampling Equipment" for instructions on how to make equipment. Optional: Include one single-sided page of labeled photos or drawings showing equipment in use.
14. **Illegal Dumping – Poster** (Ages 15-18)  
(14" x 22") Discourage illegal dumping and explain how illegal dumps can contaminate water or create other problems.
15. **Landfill Display** (Ages 14-18)  
Display showing how landfills work. Display must fit a space that is 3' by 3' when sides are extended for display.

#### **All Levels**

16. **Group Environmental Project Display** (all ages). This exhibit is to consist of a report of an environmental project carried out by 4 or more 4-H members under the supervision of a 4-H leader. The project may focus on any area of environmental stewardship including recycling, education about a local environmental issue, planting trees or other area of interest. Display not to exceed 3' x 3' (depth x width)

Judging criteria:

1. A brief project description and statement of purpose and objectives.
  2. Creativity and quality of project.
  3. A brief summary of project activities, extent to which objectives were achieved, knowledge gained, significance of the project to the environment in the community, and number of people involved and/or impacted by project.
  4. Media campaign. Include copies of newspaper clippings and other publicity related to the project.
  5. Photographs may be included.
17. **Individual Self-Directed Environmental Stewardship Project**  
Educational report, display or exhibit on the efforts of the member to protect or improve the environment in or near his/her community. Projects may include topics such as protecting water quality, recycling, illegal dumping, household hazardous wastes, reducing soil erosion on farmland, controlling urban runoff or other topics relevant to the community. Project may include: (1) Hands-on efforts (such as controlling erosion by tree planting or use of buffer strips), (2) Educational programs conducted in the community, including numbers reached and newspaper clippings (such as minimizing solid waste), or (3) A combination of hands-on and educational.

**SECTION 320 -  
CROPS  
AGRONOMY DIVISION**

**Premiums:  
\$2.50, 2, 1.50, 1, 1, 1, 1, 1, 1, 1, 1**

**GUIDELINES:**

- \* All crop exhibits must be grown by the exhibitor as a part of a 4-H project during the year exhibited. Only one exhibit allowed in each class per individual. All crop exhibits must be grown by the exhibitor as a part of a 4-H project during the year exhibited. Grain may not be returned to the exhibitor except for the following legumes: alfalfa, sweet clover, and vetch.
- \* Grain and crop seed exhibits should be brought and will be exhibited in one gallon clear jars (plastic or glass) with a lid. Alfalfa and small seeded legumes can substitute ½ gallon clear jars.
- \* Exhibits of bolls of cotton, ears of corn, or heads of grain sorghum should be brought and exhibited in a shallow wooden, plastic, or cardboard box of appropriate size for the respective exhibit.

**4-H COTTON EXHIBIT (20 open bolls)**

Exhibit to be shown with petiole attached, bract leaves removed and burr side up.

Class

1. Any Variety cotton

**4-H CORN EXHIBIT (10 ears)**

2. Corn Ears

**GRAIN SORGHUM EXHIBIT (10 heads)**

Exhibit to be trimmed with 2½ inches of peduncle left on the head.

3. Grain sorghum
4. Grain sorghum (15 lbs grain)

**4-H CANOLA EXHIBIT**

5. Canola

**4-H SMALL GRAIN EXHIBIT**

All exhibits of wheat must be labeled as to specific variety or name of hybrid. Small grain exhibit shall be one peck. Suggested varieties are listed for classes 7-9.

6. Very Early and Early Maturity Hard Red Wheat Varieties Maturity Wheat (such as Coronado, Triumph 64, TAM 107, Custer, Jagger, TAM 110, Ok101 Above, AP502 CL)
7. Medium Maturity Variety Wheat (such as TAM 202, 2137, AGSECO 7853, TAM 200, 2174, Ike, Ogallala, TAM 302, 2158, Intrada, 2163, 2145, Jagalene)
8. Late Maturity Variety Wheat (such as Scout 66, Trego, Big Dawg, Lockett, Longhorn, Thunderbolt, Cutter)
9. Any other wheat variety not listed
10. Oats, any variety
11. Rye, any variety
12. Barley, any variety

**4-H LEGUME SEED EXHIBIT**

13. Alfalfa (2 quarts)
14. Other small seeded legumes, such as vetch, sweet clover, etc. (2 quarts)
15. Soybeans (1 peck)
16. Other large seeded legumes, such as cowpeas, mungbeans, winter peas, etc. (1 peck)
17. Peanuts, any type, any variety (1 peck)

**PEANUT INFORMATION EXHIBIT**

- \* Any 4-H member interested in learning more about peanuts and the peanut industry may prepare an exhibit.
- \* The exhibit shall consist of an educational exhibit that will fit a 3' wide x 3' deep. It must be free-standing with sides attached. A 4-H notebook should be included in the display. The exhibit should provide information about one phase of the peanut industry such as history, use, production, processing, or importance. The exhibit should increase the public awareness of the importance and impact of the specific sector of the peanut industry selected. The notebook should include any involvement the exhibitor has had with teaching others, giving talks or demonstrations, preparing peanut foods, planning programs, producing peanuts, etc. The notebook may be typed or handwritten and should include pictures. Awards furnished by Oklahoma Peanut Commission.
- \* Criteria for judging: 30 points Completeness of educational lesson, 30 points Public appeal, 40 points notebook.

Class

18. **Jr. Division** (1<sup>st</sup>, 2<sup>nd</sup> & 3<sup>rd</sup> years) (ages 9-13)
19. **Sr. Division** (4<sup>th</sup> year and above) (ages 14 and over)

## **SECTION 321 FORAGE FOR LIVESTOCK AND WILDLIFE**

4-H members may have one exhibit per class.  
The exhibitor's name and address must be on the back of the display board.

References for the displays are:

- Field Guide to Oklahoma Plants, OSU Rangeland Ecology and Management Publication, contact OSU County Extension Office or Natural Resources Conservation Service Office
- National Range Judging Contest 4-H Manual #149
- A Checklist of Prairie, Shrubland, and Forest Understory Plants of Oklahoma, OSU Fact Sheet F-2872
- Bobwhite quail Habitat Evaluation and Management Guide, OSU Circular E-904
- White-tailed Deer Habitat Evaluation and Management Guide, OSU Circular E- 979.

Classes 1-8 are exhibits of ten (10) native or introduced, annual, biennial, or perennial plants mounted on plywood, pegboard, or other suitable material approximately 3 feet by 3 feet. Two holes ½ inch in diameter and 1 inch from the top should be drilled in the board to facilitate displaying the exhibit. Exhibitor must sign and date the board on the back.

Plant specimens must have been collected during the current project year. Single plants or bundles should not exceed 1 inch in diameter. No plant should extend above or below the display board. Plants must be labeled with the common name. Judges will use references listed above.

Label with letters approximately ½ inch high. Labels may be placed above, below, or across the plants.

Class

1. Forages with desirable grazing value for cattle
2. Forages with undesirable grazing value for cattle
3. Forages with desirable browsing value for white-tailed deer
4. Forages with undesirable browsing value for white-tailed deer
5. Forages with desirable food value for bobwhite quail
6. Forages with undesirable food value for bobwhite quail
7. Forages with desirable food value for wild turkey
8. Forages with undesirable food value for wild turkey

## **HORTICULTURE DIVISION SECTION 322 HOME GARDENING**

**Premiums: \$3, 2.50, 2, 1.50, 1, 1, 1, 1, 1, 1, 1, 1, 1,**

### **GUIDELINES:**

Only one exhibit allowed in each class per individual.

Class

1. Potatoes, yellow, white or russet, 3 specimens
2. Potatoes, red, 3 specimens
3. Okra, 6 pods
4. Onions, yellow, 3 specimens
5. Onions, white, 3 specimens
6. Onions, red, 3 specimens
7. Pumpkin, field type (oblong), one
8. Pumpkin, jack-o-Lantern (round and flat), one
9. Squash, winter, acorn, one
10. Squash, winter, butternut, one
11. Squash, winter, other
12. Eggplant, 2 specimens
13. Squash, summer, zucchini, 2 specimens
14. Squash, summer, yellow straight neck, 2 specimens
15. Squash, summer, yellow crookneck, 2 specimens

Class

16. Squash, summer, patty pan (scallop type), 2 specimens
17. Sweet Potatoes, (any variety), 3 specimens
18. Pepper, jalapeno, 5 specimens
19. Pepper, other hot pepper, 5 specimens
20. Pepper, sweet bell pepper, 5 specimens
21. Pepper, banana pepper, 5 specimens
22. Tomatoes, large type, 5 specimens
23. Tomatoes, cherry type (1½" or less in diameter), 5
24. Watermelon, oblong type, one
25. Watermelon, round type, one
26. Watermelon, small icebox, one
27. Red apples, plate of five
28. Yellow Apples, plate of five

## HOME GARDEN FOOD BASKET

- \* This exhibit is a quality selection of from five to nine different species of mature fruits and/or vegetables from the exhibit list above. Items not listed above can be used, but should not be more than a third of the species utilized. Amounts of fruits and vegetables in this exhibit should be such that they can be arranged in a neat and orderly manner and have good eye appeal. There must be enough of each fruit or vegetable for the judge to determine quality.
  - \* All fruits and vegetables exhibited must be grown by the exhibitor.
  - \* No specimens in this exhibit may be entered in another class. Any combination of fruits and vegetables may be used.
  - \* The exhibit must be in a container such as a basket or box.
  - \* One third ( $\frac{1}{3}$ ) of the judging will be on how well the exhibit is prepared and presented. Packing such as paper, straw or cloth, may be used but the fruits and vegetables should be the main attraction of the exhibit. No artificial plant material or specimens can be utilized as part of the exhibit.
31. **Jr. Division** (1<sup>st</sup>, 2<sup>nd</sup> & 3<sup>rd</sup> years) (ages 9-13)  
32. **Sr. Division** (4<sup>th</sup> year & over) (ages 14 and over)

## SECTION 323 4-H HOME GROUNDS

### Premiums:

**\$3, 2.50, 2, 1.50, 1, 1, 1, 1, 1, 1, 1, 1,**

Only one exhibit allowed in each class per individual.

### Exhibit Unit I - Landscaping Home Grounds

- \* "Before and After" pictures not to exceed 5" x 7" of yard clean up, plantings or construction of landscape elements mounted securely on one 14" x 22" sheet of poster board shall constitute this exhibit. Number of pictures should be no less than two or more than eight. Posters must be permanently signed and dated on the back.
- \* Neatness and arrangement of pictures is important. A brief explanation of the project should be attached to the exhibit, and each picture must be labeled. The before and after pictures should show a definite change and should be taken from the same place so judges can evaluate the change. An exhibit should not be entered more than once unless it has been substantially revised.

#### Class

1. **Junior** - (Ages 9-13)
2. **Senior** - (Ages 14 and over)

### Exhibit Unit II - Herbarium Card

These exhibits shall consist of dried and pressed specimens of leaves and other specified parts of native or cultivated trees, vines and/or shrubs. Each leaf specimen should be mounted on a separate 8" x 10" herbarium card available at your county extension centers. Only the information required in your division should be filled out. The cards should be enclosed in a notebook or binder. Each specimen should be covered with a transparent plastic or similar covering to protect it from damage. No leaf should be more than 3 years old and at least one-third of the specimens must have been collected during the current project year. Instructions for collecting and pressing are available in the OSU Extension Center.

#### Class

3. **Ages 9-11** - A collection of 15 specimens with the following information: (1) common name; (2) general class; (3) kind of plant
4. **Ages 12-14** - A collection of 25 specimens with a pressed flower or fruit or seed included with each specimen. Information on the card to be filled out is (1) common name; (2) general class; (3) kind of plant; (4) form; (5) color; (6) exposure.
5. **Ages 15 and over** - A collection of 30 specimens with a pressed flower, fruit or seed included with each specimen. All information on the card should be filled out

### Exhibit Unit III - Group or Club Exhibit

#### Class

6. **Group or Club Exhibit.**
  - \* This exhibit to consist of landscape or environmental beautification project report on a project such as home grounds, school, community center, church, city or roadside park, highway beautification, clean-up campaign, etc.
  - \* A group is to consist of 3 or more 4-H members under supervision of 4-H leaders.
  - \* All projects must employ horticulture material for the purpose of conserving natural beauty of an area or improving the aesthetic quality and/or function of an area. Other material such as concrete walks, benches, etc., may be used in addition to the horticulture material.

## **Judging Criteria**

- A. A brief project description and statement of purpose and objectives.
- B. Creativity demonstrated and quality of the project.
  1. Extent to which plan integrates total needs of area, short and long term.
  2. Functional use and aesthetic considerations of horticultural materials and techniques.
  3. Operational considerations of expenses encountered, resource personnel contracted and maintenance factors.
  4. "Before and After" photographic sequence to illustrate effectiveness of the project.
- C. A brief summary of project activities, extent to which objectives were achieved, knowledge gained and the particular significance of the project toward the improvement and beautification of your environment.
- D. Newspaper clippings and other publicity of the project.

## **SECTION 324—HOUSE PLANTS**

**Premiums: \$3, 2.50, 2, 1.50, 1, 1, 1, 1, 1, 1, 1**

### **TERRARIUM**

Terrarium of plant life. Refer to OSU Fact Sheet No. F-6438 or a similar guideline. No specific size of container, materials, plants or methods. Criteria for judging will be (1) compatibility and arrangement of plants and materials (2) appropriate potting media (3) attractiveness and originality (4) appropriate size of plants for container. Terrariums should feature either woodland or tropical plants and feature at least 3 different species of plants. At time of judging, terrariums must be completely covered at all times.

Class

1. **Ages 9-11**
2. **Ages 12-14**
3. **Ages 15 and over**

### **DISH GARDENS**

Dish Garden of plant life. A 4-H / OSU Fact Sheet is currently in production. Until it comes available refer to <http://www.greatbiggreenhouse.com/downloads/DISH%20GARDENS.pdf>, <http://www.thegardenhelper.com/dish~gardens.html> or other online or print resources for project ideas and information. Criteria for judging will be (1) compatibility and arrangement of plants, potting media, and container (2) attractiveness and originality (3) appropriate size of plants for container. Dish Gardens may feature succulents, carnivorous plants, cactus, or foliage plants. Dish garden should feature at least 3 different species of plants.

4. **Ages 9-11**
5. **Ages 12-14**
6. **Ages 15 and over**

### **RESIDENTIAL LANDSCAPE DESIGN DRAWING**

Develop a landscape design/drawing for the provided residence. Base maps should be printed on 11"x17". Once printed verify scale is 1in=10ft. Design drawings are to be made directly on the provided base maps. Use provided examples of landscape symbols to draw and/or trace on to the base map. Use the provided color rendered landscape drawings for example of effective designs and color techniques.

All material can be found at <http://www.hortla.okstate.edu/youth/index.htm> then click on "**4H - Landscape Design**"

## **Competition Guidelines**

- \* Use white 11" x 17" paper to horizontal exhibit landscape drawings.
- \* Create a column on right side of sheet for title block, 2 inches wide from top of drawing to bottom. List the following in INK: Scale, symbols of plants, numbers representing trees, shrubs and plants and how many of each plant were used in the landscape. Example: 1 - Rose (6), 2 - Oak trees (4), 3 - Petunia (3 dozen or 36). Name, date and chapter.
- \* Drawing is top view (plan view).
- \* Use the scale provided: 1 in = 10 ft
- \* Hand drawings or CAD drawings will be accepted.
- \* Draw plant symbols at mature plant size.
- \* Use the plant symbols and the materials symbols provide.
- \* Drawings must be full color.
- \* Walkways should be 3 ft or 5 ft wide.
- \* Patio(s) are required on the back of the house.
- \* In the drawings use a line to indicate the planting beds. All small trees, shrubs, and perennials should be inside a planting bed. Large trees could be found in the lawn or inside planting beds.

Class

7. **Ages 9-11**
8. **Ages 12-14**
9. **Ages 15 and over**

## Horticulture in Our Lives Poster Exhibit

Posters must be 14" x 22" and must be permanently signed and dated on the back prior to laminating. Judging committee may mark or punch if not marked. Text of posters should be readable from at least 10 ft. away.

Choose a fruit, vegetable, nut, spice or beverage (tea, coffee, chocolate) crop, and create a poster depicting one of the following topics related to that crop:

- a. History (domestication process, global spread via immigrants, etc.)
- b. Production
- c. Use in different cultures
- d. Use in different processed foods

Class

10. **Ages 9-11**

11. **Ages 12-14**

12. **Ages 15 and over**

## SECTION 325 – Companion Animals

\* **All Companion Animal exhibits should focus on one of the following:**

- 1) Animal Health and/or Nutrition**
- 2) Good Husbandry and/or Grooming**
- 3) Training and/or showing**
- 4) Service and/or Citizenship.**

- \* Companion Animals refer to animals utilized as pets, not livestock or wildlife. In cases of animals (i.e. rabbits, turtles, etc.) that can be represented as a companion or a non-companion animal projects it will be up to the 4-H member to make sure that their entry represents companionship.
- \* The 4-H member's name, age, and county must be included attached to the exhibit. Exhibits deemed to be inappropriate will not be displayed.
- \* If you use text, pictures, drawings, artwork or other information not created by you in your exhibit you must cite the source. See "COPY WRITTEN MATERIAL AND REFERENCING SOURCES" section at opening of 4-H Division
- \* When using the official clover with H's, the tail should curve to the right and the words 18u.s.c. 707 must appear under the lower right leaflet, except if hand drawn clovers.

**Companion Animal Poster** illustrating one of the following 1) Animal Health and/or Nutrition 2) Good Husbandry and/or Grooming 3) Training and/or showing 4) Service and/or Citizenship. Posters must be 14"x 22". For display purposes, exhibitors are encouraged to laminate all posters or cover them with clear plastic film. Posters must be permanently signed and dated on the back. If not marked the judging committee may mark or punch. Posters may be horizontal or vertical. Text of poster should be readable from at least 10 ft. away.

Class

1. **Jr. (ages 9-13)**

2. **Sr. (ages 14 and over)**

**Companion Animal Display** illustrating one of the following: 1) Animal Health and/or Nutrition; 2) Good Husbandry and/or Grooming; 3) Training and/or showing; 4) Service and/or Citizenship.

Space for the booth is 3 feet deep and 4 feet wide (with sides extended for display). Back can be 4 feet high. Display must be free-standing. Models, photographs, posters or other means for display may be used. Display may be prepared by an individual or group from a county. Exhibit must prominently display a 4-H clover or mention 4-H.

Class

3. **Jr. (ages 9-13)**

4. **Sr. (ages 14 and over)**

**Companion Animal Photo Story Board** illustrating one of the following 1) Animal Health and/or Nutrition 2) Good Husbandry and/or Grooming 3) Training and/or showing 4) Service and/or Citizenship. Story Board should contain 4 to 6 photos attached to the surface of a white or a colored foam core, poster, or mat board no larger than 14" X 22". Each photo should contain a caption. Judging criteria will emphasize content first and photo composition second. Photos are to be taken by the exhibitor.

Class

5. **Jr. (ages 9-13)**

6. **Sr. (ages 14 and over)**

**Companion Animal Single Photo Entry** illustrating one of the following 1) Animal Health and/or Nutrition 2) Good Husbandry and/or Grooming 3) Training and/or showing 4) Service and/or Citizenship. Prints must be no smaller than 3.5" x 5" and no larger than 5" x 7." Digital Photos may not be manipulated or altered except for color and contrast adjustments, cropping, exposure adjustments, and red eye reduction. Prints must be securely attached to the surface of a poster board or mat board. No double matting, use of multiple layers or more than one color. The entire print must be seen and cannot be masked in any way. Boards must be 10" x 10" or 14" x 14." Captions are optional, but not required. Photos are to be taken by the exhibitor.

Class

7. **Jr. (ages 9-13)**

8. **Sr. (ages 14 and over)**

**Me and My Pet Journal** - A 3 ring binder, 3" or smaller, showing activities you and your pet have been doing this past year. Emphasis should be given to 1) Animal Health and/or Nutrition 2) Good Husbandry and/or Grooming 3) Training and/or showing 4) Service and/or Citizenship. It may include but is not limited to training notes, photos of you and your pet working on a new trick, newspaper clippings of you and your pet participating in service projects, breeding records, animal health records and much more. Members are encouraged to keep multiple years in their journal but the previous years' work should be clearly labeled as such. Judging emphasis will be placed on the current year's work.

Class

9. **Jr. (ages 9-13)**

10. **Sr. (ages 14 and over)**

**Other Companion Animal Item** Exhibit must have a 3x5 inch note card describing the exhibit, what was done to create or prepare this exhibit and how the exhibit relates to 1) Animal Health and/or Nutrition 2) Good Husbandry and/or Grooming 3) Training and/or showing 4) Service and/or Citizenship. Posters, Photos, displays and Journals are not allowed in this category.

Class

11. **Jr. (ages 9-13)**

12. **Sr. (ages 14 and over)**

## **SECTION 326 ANTIQUES AND COLLECTABLES/LEISURE EDUCATION**

**Premiums: \$3, 2.50, 2, 1.50, 1, 1, 1, 1, 1, 1, 1**

The purpose of this project area is for members to learn about and document personal, 4-H, or subject related history using appropriate conservation, preservation and/or restoration methods. Think of this project like our own "Antique Road Show" 4-H project area.

- \* Each exhibit will require research and reporting to authenticate the item being exhibited and to justify the method chosen to preserve/display the item.
- \* 4-H Curriculum has been developed to introduce and educate 4-H members and volunteers in the preservation and conservation of artifacts. The criteria/standards used to evaluate the will reflect the member's mastery of conservation and/or preservation techniques and their ability to document memorabilia/history. This is accomplished with the use of the **Authentication Card (4H•HLTH•411)**.
- \* The Authentication Card must be legible and securely attached to the front of **ALL** exhibits. **Exhibits will be disqualified if they do not have a card.**
- \* The county and state fair will do their *best* to insure items are respectfully handled, but they do not assume responsibility for any item damaged or lost while on exhibit. Please consider this when entering your "collectables."
- \* **No loose collections/sets will be accepted. A collection must be SECURELY attached/contained to make one entry.** This means each item within the collection is enclosed in a frame, notebook, attached to a tray, or firmly attached to a rigid display board (foam core, matt board, corrugated plastic, etc.) in a manner where items cannot be separate from the collection.

\* Curriculum currently available or under development - 4H· HLTH· 403 Preserving Vintage Clothing and Textile Products – Part 1; 4H· HLTH· 404 Preserving Vintage Clothing and Textile Products – Part 2; 4H· HLTH· 405 Storage and Display of Heirloom Textiles in the Home; 4H· HLTH· 406 Preserving Photographs, Books and Paper Documents; 4H· HLTH· 407 Preserving Metal, Wood and Plastic Collectibles (not available); 4H· HLTH· 408 Preserving Memorabilia; 4H· HLTH· 409 History Mysteries Part 1– Recording and retelling the history of 4-H and its people through stories; 4H· HLTH· 410 History Mysteries Part 2– Writing the Story – your treasures - from Clues; 4H· HLTH· 411 Documenting and Cataloging Collectibles (not available); 4H· HLTH· 412 Displaying Collections and Collectibles (not available); 4H· PDL· 111 Personal Development – Documenting our Heritage; and 4H· HLTH· 413 Authentication Card

**Collection** – Minimum of five (5) items. Each collection will be limited to a display area no larger than 22" X 28" when lying down.

Class

1. **Paper Materials** – Patterns, 4-H Project Manuals/Curriculum, Books/Magazines, Postcards, News Clippings, Canning Labels, Photos, Bumper Stickers, etc.
2. **Buttons** (Example-I Bleed Green, I Luv 4-H, etc.)
3. **Jewelry or Medals**
4. **Textile items** – Clothing Accessories, Patches, Hot Pads, etc.
5. **Dishes/Containers/Sculpture** - Ceramics, Pottery, Glass, etc.
6. **Metal Materials** - Signs, Bike or Car Tag, Tools, or similar such items
7. **Other collectables** (These items should keep with the high ideals and principles of the 4-H program)

## Historic Preservation, Restoration and Replication of Photography

Class

### 8. Photography

Purpose is to determine the member's application of skills and knowledge gained in the area of restoration and preservation of antique/collectable photographs. Project work will be judged on research, knowledge and an appropriate method of preservation restoration or replication.

Authentication Card – Be sure to include when possible: documentation of the people in the picture, location, where it originated, photographer and why this particular picture deserved the historical "consideration" as a collectable.

Choose one of the following methods and justify your choice as it relates to preservation on the authentication card.

- A. Original photographs electronically copied, repaired/enhanced when necessary or printed from the original negative. The photo should be appropriately displayed for preservation purposes. Be sure to document why this particular picture deserved the historical "consideration."
- B. Follow preservation guidelines as noted in 4H•HLTH•404. Securely hinge original photo enclosed in a protective sleeve (so it can be lifted to view back of the photograph).
- C. If the desire is to preserve the historic integrity of the photograph and frame, appropriate conservation methods should be researched, applied and documented as part of the exhibit.

### COLLECTABLE(S)

Purpose is to determine the member's application of skills and knowledge gained in the area of restoration and preservation of antiques and collectables. Project work will be judged on research, knowledge and an appropriate method of preservation, restoration or replication.

Any item or set of items must be displayed in a manner that provides protection, is secure and can be viewed.

Class

9. **Historic Replica** – When an item cannot be restored, preserved or attained, a collector may have to replicate the item. When replicating an item it is important to research and duplicate the use of construction methods and materials as close as possible. Attach a picture/photograph of the original item.
10. **Heirloom Restoration or Preservation** – exhibit an antique or collectable which has been restored or preserved using appropriate methods. Attach a before picture of the item.

#### 4-H Alumni Division

- \* The county and state fair will do their *best* to insure items are respectfully handled, but they do not assume responsibility for any item damaged or lost while on exhibit. Please consider this when entering your "collectables."
- \* All exhibits are intended to document, preserve and share our 4-H heritage. **Authentication Card (4H•HLTH•411)** must be legible and securely attached to the front of each exhibit at the State Fair.
- \* When possible and without deterring from an item's value or fragile condition, items should be free of dust, dirt, mold, bugs, etc.
- \* When possible, provide appropriate protection for the exhibit using good preservation/restoration practices. See 4-H Collectables curriculum for more information.

#### 4-H Collections

- \* At least five "4-H" items representing our history. Each collection is limited to a display area no larger than 22" X 28" when lying down.
- \* No loose collections/sets will be accepted. **A collection must be SECURELY attached/contained to make ONE entry.** This means each item within the collection is enclosed and/or attached in a frame, notebook, on a tray or *rigid* display board (foam core, matt board, corrugated plastic, etc.) in a manner items cannot be separated from the collection.

Class

11. **Paper Materials** – Patterns, 4-H Project Manuals/Curriculum, Books/Magazines, Postcards, News Clippings, Canning Labels, Photos, Bumper Stickers, etc.
12. **Buttons** (Example-I Bleed Green, I Luv 4-H, etc.)
13. **Jewelry or Medals**
14. **Textile items** – Clothing Accessories, Patches, Hot Pads, etc.
15. **Dishes/Containers/Sculpture** - Ceramics, Pottery, Glass, etc.
16. **Metal/Wooden/Plastic Materials** - Signs, Bike or Car Tag, Tools, Desk Accessories, Pencils/Pens or similar such items
17. **Other 4-H Collectables**
18. **Original 4-H Project Work** – One item exhibited at a competitive event. When available provide a picture of the member with the exhibit, original ribbon, trophy, or plaque received/awarded.
19. **Individual's personal scrapbook**
20. **Family scrapbook** – documenting a family's participation in 4-H
21. **Historic Photograph**
22. **4-H Record Book**

### Section 327 Giant Pumpkin Contest

**Premiums: \$10, 9, 8, 7, 6, 5, 4, 3, 2, 2, 2, 2**

One entry per exhibitor

- \* One fruit of any variety of pumpkin or pumpkin-type squash may be entered.
- \* Entry limited to Canadian County 4-H.
- \* The submitted fruit must have been grown by a 4-H member.
- \* The fruit must be free of damage that would limit storage and exhibition (should be intact, without lesions, cuts or open wounds).
- \* The fruits will be weighed to determine the heaviest.

Class:

1. Giant Pumpkin



## **Section 328 4-H Cloverbuds (5-8 years old)**

Exhibitors in Cloverbud section must have an enrollment card on file in the Extension Office. Exhibits with an asterisk must follow the Cloverbud Activity Guide sheets available at the Canadian County Extension Center. All other exhibits can be your own personal design. All exhibits will receive a participation ribbon and each exhibitor will receive \$1.00 per exhibit up to a limit of \$10 per exhibitor. All posters will be 14"x22" which is half of a regular size poster board.

### **Personal Development**

1. \*What I Want to be When I Grow Up poster
2. \*Feelings Poster
3. \*Puppet
4. \*Trustworthy Eagle Mobile
5. Collage of Caring Actions – No larger than 14"x22"
6. Greeting Card or special occasion

### **Pets & Animals**

7. \*Pet's Needs Poster, 14"x 22"
8. \*Bird Feeder
9. \*Pet's Needs Scrapbook
10. \*Pet's Needs Mobile
11. Animal Collage – No larger than 14"x22"
12. Picture Book – 3-4 pictures of you doing things with your pet(s)

### **Home Environment**

13. \*Pencil Caddy
14. \*Leather-look Flower Pot
15. Mobile of Favorite Things – any theme
16. Coasters – set of 4 (use any medium)
17. Decorated container for bedroom
18. Puzzle (no larger than 9"x13")

### **Food & Nutrition**

19. \*Popcorn Snack (2 cups in plastic bag)
20. \*Cereal Crunch (2 cups in plastic bag)
21. \*No-bake cookies – 3 cookies on a plate
22. \*Trail Mix – attach card listing 5 uses (2 cups in plastic bag)
23. \*Meal list for one day using the Nutrition Pyramid as a guide
24. \*Marshmallow Cereal Cookies – 3 cookies on a plate
25. Cloverbud Poster Art

Open category allows 4-H Member to create his/her own poster and theme. Poster should be constructed on poster board 14"x 22". It may be horizontal or vertical, may be produced by any medium (watercolor, ink, crayon, acrylic, charcoal, collage, etc.). The Cloverbud's name, age, address, theme area, and a statement that describes the poster should be on the back of the poster in the upper-left hand corner.

### **Cloverbud Crafts**

26. Plastic Craft
27. Paper Craft
28. Wood Craft
29. Fabric Craft
30. Recycled Craft
31. Miscellaneous

\*Items with asterisk(\*) have instructions available from the Extension office; all other items can be completed as the 4-H'er desires.

**Section 329**  
**Susan Meitl Memorial Award for**  
**Outstanding 4-H Fair Exhibitor**  
**\$10.00, \$9.00, \$8.00**

The points are determined as follows and include only those exhibits in 4-H projects:

|           |           |                   |          |
|-----------|-----------|-------------------|----------|
| 1st ..... | 10 points | 6th.....          | 5 points |
| 2nd.....  | 9 points  | 7th.....          | 4 point  |
| 3rd.....  | 8 points  | 8th.....          | 3 points |
| 4th.....  | 7 points  | 9th.....          | 2 points |
| 5th.....  | 6 points  | 10th & below..... | 1 point  |

- \* In case of a tie, rankings will be based on who has the most 1st place, 2nd place, 3rd place exhibits, and on down the rankings until a winner is declared.
- \* Ages as of 1/1/11.
- \* Trophy - 1st place Junior Exhibitor, 9-12 years of age
- \* Trophy - 1st place Senior Exhibitor 13 & over
- \* Placings - 1st place - \$10.00 & Trophy
- \* 2nd place - \$9.00
- \* 3rd place - \$8.00
- \* 4-H'er must figure their points, list and hand in to the Extension Office by date listed on form.

Outstanding 4-H Junior Exhibitor award sponsored by  
Banner Co-op Elevator Association  
Outstanding 4-H Senior Exhibitor award sponsored by  
Canadian County Farmer's Union

**Section 400**  
**4-H & FFA Combined Judging Contest**  
**Superintendents Dr. Clay Elliott & Ed Zweiacher**  
**Saturday, August 27, 9:00 a.m.**

- \* This program is open to 4-H and FFA members of the county. Any club or chapter in the county may enter one or more teams in each contest.
- \* Competition for this award will be divided into three levels. Level one being 9 years of age thru 6th grade. Level two 7th, 8th and 9th grades. Level three 10th, 11th and 12th grades.
- \* Animal Classes will be determined by the Superintendents and their selection is final.

**CLASS**

Livestock - Three classes of oral reasons will be given.

1. Team Awards .....Plaque 1-2-3
2. Individual Awards ..... Plaque 1-2-3-4-5

**Section 401**  
**Livestock Quiz Bowl**  
**Saturday, August 27, 1:00 p.m.**  
**Location to be announced**

- \* The primary objective of the Livestock Quiz Bowl is to provide an opportunity for youth to demonstrate their knowledge of livestock and related subject matter in a competitive setting where attitudes of friendliness and fairness prevail.
- \* Each team shall consist of no less than 4 and no more than 5 members representing 4-H or FFA. Only 4 members will compete at any 1 time. The fifth can be alternated in but only once per match.
- \* Each match will be divided into 2 halves based on the number of questions and participants.
- \* There will be Junior and Senior Divisions
- \* For specific rules contact the OSU Extension Office at 262-0155.  
1st Place – Each Junior and Senior Team Member—Plaque  
1st Place – Junior Team – Plaque  
1st Place – Senior Team – Plaque

**Section 402**  
**Farmhand Olympics**  
**Thursday, Aug. 25, 6:30 p.m. - Show barn**  
**\$50, 45, 40, 35, 30, 25**

**RULES:**

1. An event team will consist of 3 members
2. A Junior Team will be 9-12 Years of Age
3. A Intermediate Team will be 13-15 Years of Age
4. A Senior Team will be 16-18 Years of Age
5. Teams will be members of a bonafide 4-H or FFA organization and all members from the same club or chapter.
6. The winner will be determined by total points - 100 points for 1st, 75 points for 2nd, 50 points for 3rd, 25 points for 4th. If there is a tie in an event, the points will be split.
7. In case of a tie, one event before the contest will be designated as the breaking event
8. Registration will be taken at the livestock office upon completion of the sheep show. Cutoff will be when the event starts.
9. Events start 1/2 hour after completion of sheep show in the show arena
10. Prize money will be paid to the top six teams of each division and mailed to the bonafide 4-H leader or FFA advisor who entered the team.
11. Superintendents reserve the right to alter events.

**Event 1. Egg Walk**

Objective: Carry the egg in a spoon to the other end and back. Should the egg break, the team will be given a 10 second penalty and a new egg. They will continue from the point where they broke the egg. The race will continue until all three members complete the race.

**Event 2. Sack Race**

Feed sacks are items needed for either feed storage or involved in the livestock feeding process on many farms and ranches. **Objective:** Each member will place their feet in a sack and hop around a designated area and back to a starting line. The member will then switch with a team member who repeats the process. The final member will then complete the procedure. The team with the fastest time will be the winning team. One hand must be kept on the sack at all times during the race.

**Event 3. Wheel Barrow Race**

A wheelbarrow is always a useful tool around the farm.

**Objective:** Each member will push a wheelbarrow to a designated area before time expires. The wheelbarrow will contain an item that must be pushed around the course. The team with the faster time will be the winner.

**Event 4. Calf Roping**

A rancher or farmer is always in need of treating a sick calf.

**Objective:** Each team member will throw and catch the calf head two times. The second team member will do the same, followed by the third team member. Team will keep rotating and team with most catches in 1½ minutes wins. Crossing the line will result in a one-catch penalty. Junior team members throw from 10 feet and senior team members from 15 feet.

**Event 5: Water Hauling**

Animals of all types must have water to drink. Sometimes it becomes apparent that water must be transported to various farm or ranch locations.

**Objective:** To transfer water from one container to another container via water buckets. Each team will be given one water bucket; there will be two tanks in designated areas - one full, one empty. Each team will be allowed 1 and 1/2 minutes to transfer water from one tank to another. Each team member will be required to carry the bucket at least 1 time. Failure to do so will result in a 5 inch penalty. The team who transfers the most water as measured with a ruler is the winner.

**Section 403**  
**Trap Shooting**  
**Saturday, 2:00 p.m. August 27, 2011**

**OTA Shooting Range**  
**Superintendent— Brian Harper**

There will be an ADULT class again this year, as well as the Jr & Sr Classes. Competition to be held at OTA Shooting Range southeast of El Reno. Competition for this award will be divided into three groups. Junior group will be ages 9-14 and Senior group will be 15-19 years of age, 20 and over will shoot in the adult class. Shooter will furnish their own ammunition and firearm.

Junior and Senior participants must have Hunter Certification verification and "Statement of Release of Responsibility" signed by parent or guardian. Ear and eye protection is required.

All OTA Shooting Range safety rules will be observed.

Individual Awards for Junior, Senior and Adult classes:

|           |                 |
|-----------|-----------------|
| 1st ..... | \$15 and Trophy |
| 2nd.....  | \$12            |
| 3rd ..... | \$10            |
| 4th ..... | \$ 8            |
| 5th ..... | \$ 6            |

**Section 404**  
**Pet Show**

**Premiums: \$3, 2, 1**

Participants may enter from 4:00 to 5:00 p.m. Saturday in show barn arena. Pet show begins at 5:00 p.m. Saturday in Livestock Show Barn Arena. Participants may enter same pet in only 2 classes. Any livestock (beef, sheep, goats, swine or horses) entered in the fair are not eligible for the pet show.

**CLASS**

1. Best Dressed Pet - 3-7 year old children
2. Best Dressed Pet - 8-13 year old children
3. Look-alike (Child/Pet) - 3-7 Year old children
4. Look-alike (Child/Pet) - 8-13 year old children
5. Most Unusual Pet - 3-7 year old children
6. Most Unusual Pet - 8-13 year old children

**FOR ALL YOUR ELECTRIC NEEDS CALL**



**Section 405  
Money Scramble**

Event will be held in arena following the Pet Show. This is for all children ages 3-8 years. The children will search for coins buried in sawdust and keep what they find in a 3 minute period. Each age is a separate class.

**Section 406  
Amateur Talent Show  
Thursday, August 25, 7:00 p.m.  
Premiums: \$15, 12, 10**

Pre-registration by August 24 required

Participants must be residents of Canadian County. Individuals or groups who have ever received monetary compensation for performances, and are beyond "amateur" status, must compete in Section 406 – Advanced Amateur Classes.

Act limited to 1 song if musical, 4 minutes for other. Provide your own taped music (no piano available). Groups or individuals may enter. Call Canadian County OSU Extension Center at 262-0155 for entry information.

**CLASS**

1. 3-8 Years
2. 9-13 Years
3. 14-19 Years
4. 20-Adult
5. Family Acts

**Section 407  
Advanced Amateur Talent Show  
Thursday, August 25, 7:00 p.m.  
Premiums: \$15, 12, 10**

Pre-registration by August 24th required

Individuals or groups who have received monetary compensation for their performance and those who perform regularly may compete in this class.

**CLASS**

1. 3-8 Years
2. 9-13 Years
3. 14-19 Years
4. 20-Adult
5. Family Acts

**SENIORS 2012**  
All graduating 4-H and FFA Members in the class of  
2012 that exhibit livestock at the Canadian County  
Fair and Jr. Livestock Show have  
an opportunity to apply for the  
Canadian County Fair Board, Inc., scholarship.  
Details are available from Brad Tipton, 4-H Agents, or  
FFA Instructors.  
Application deadline is  
February 1, 2012